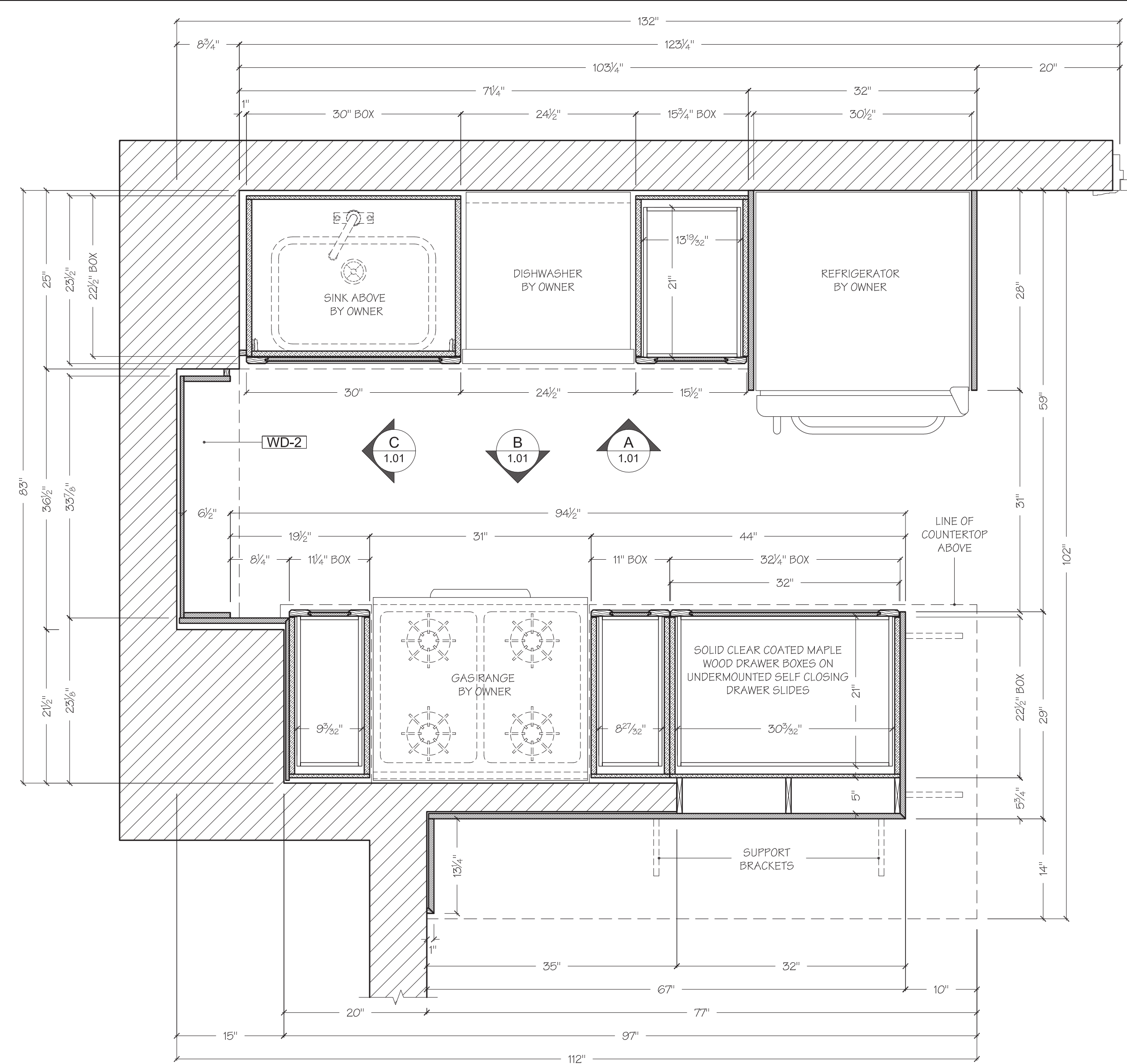
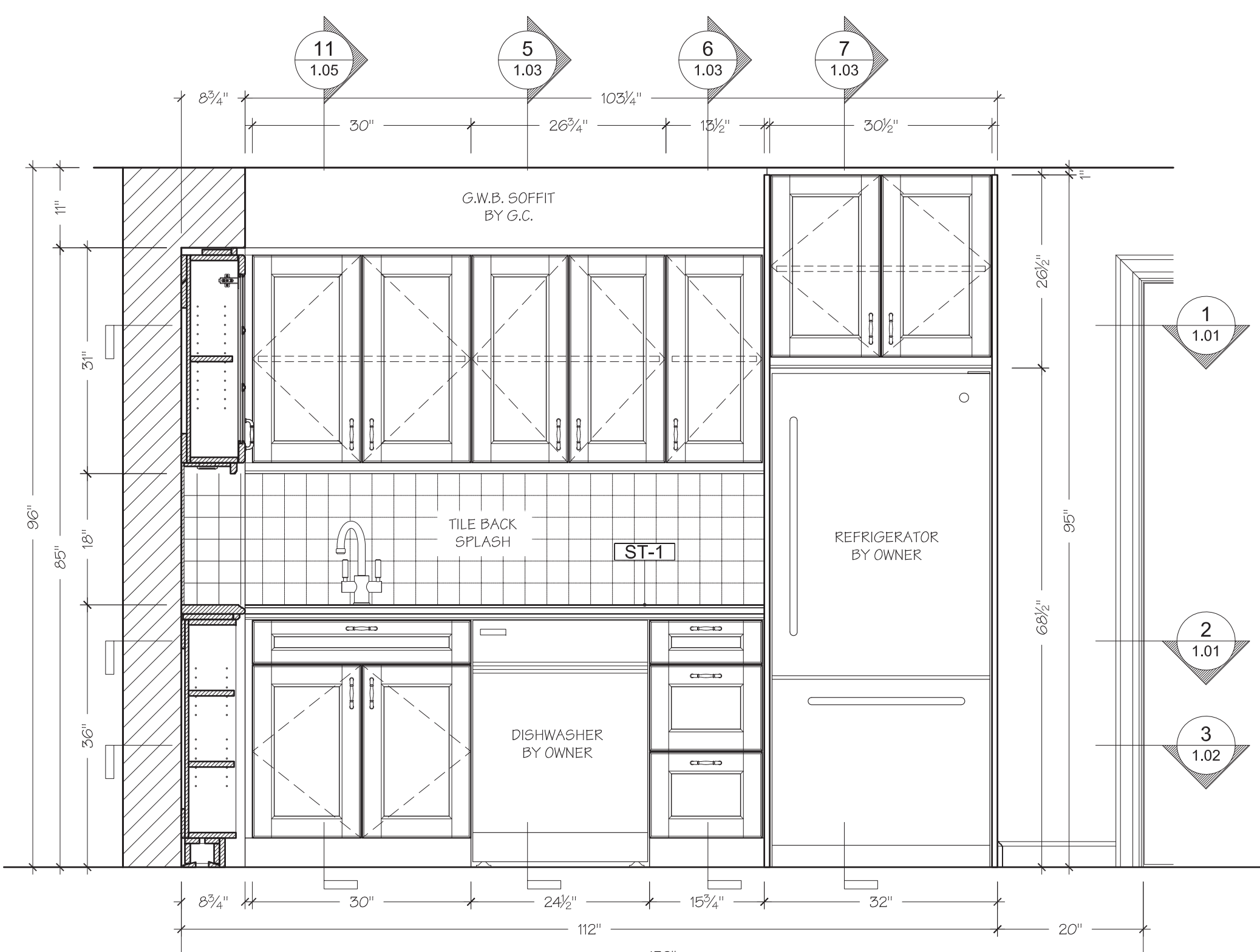


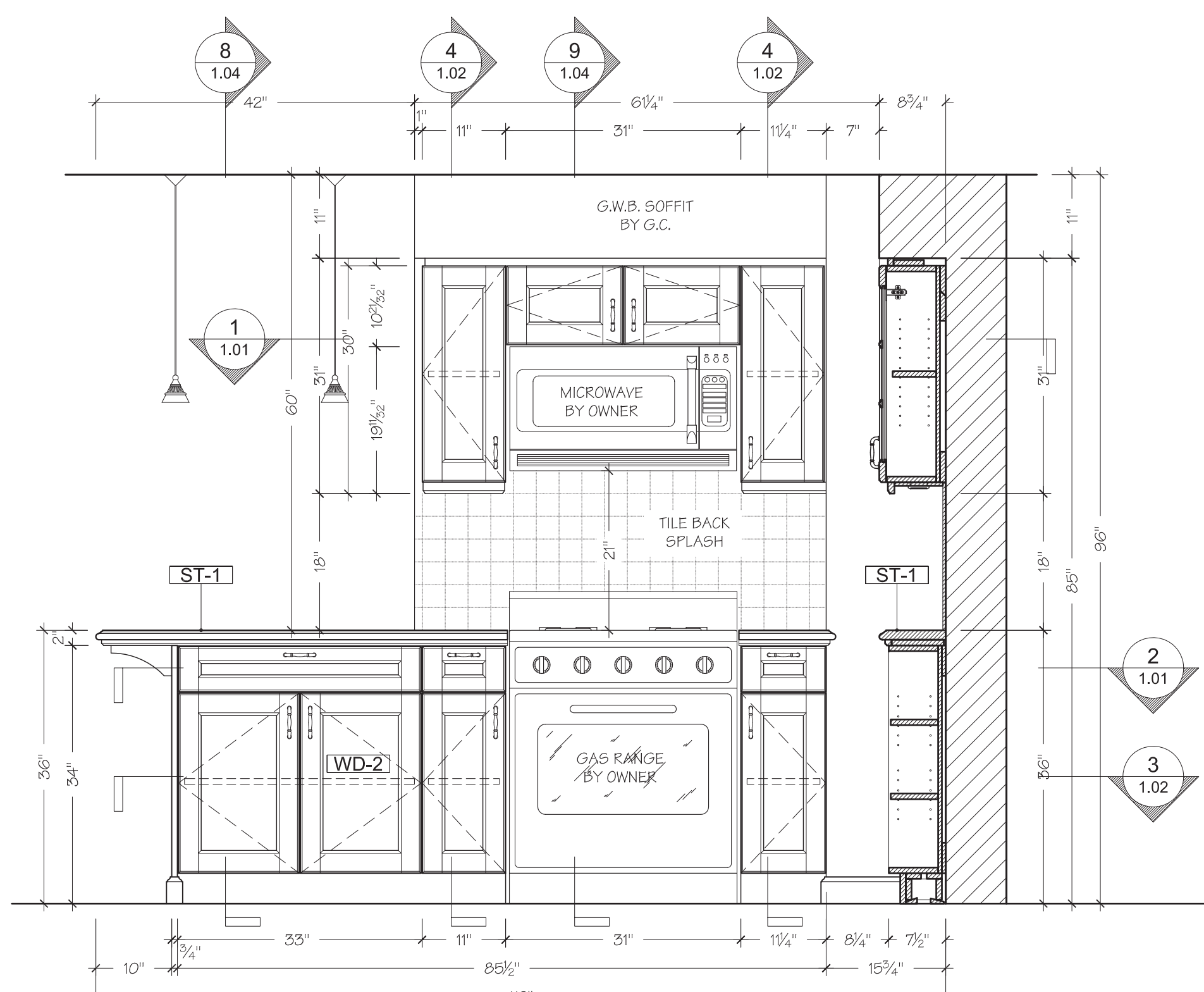
**1 SECTION PLAN**  
SCALE: 1" = 1'-0"  
WALL CABINETS  
KITCHEN



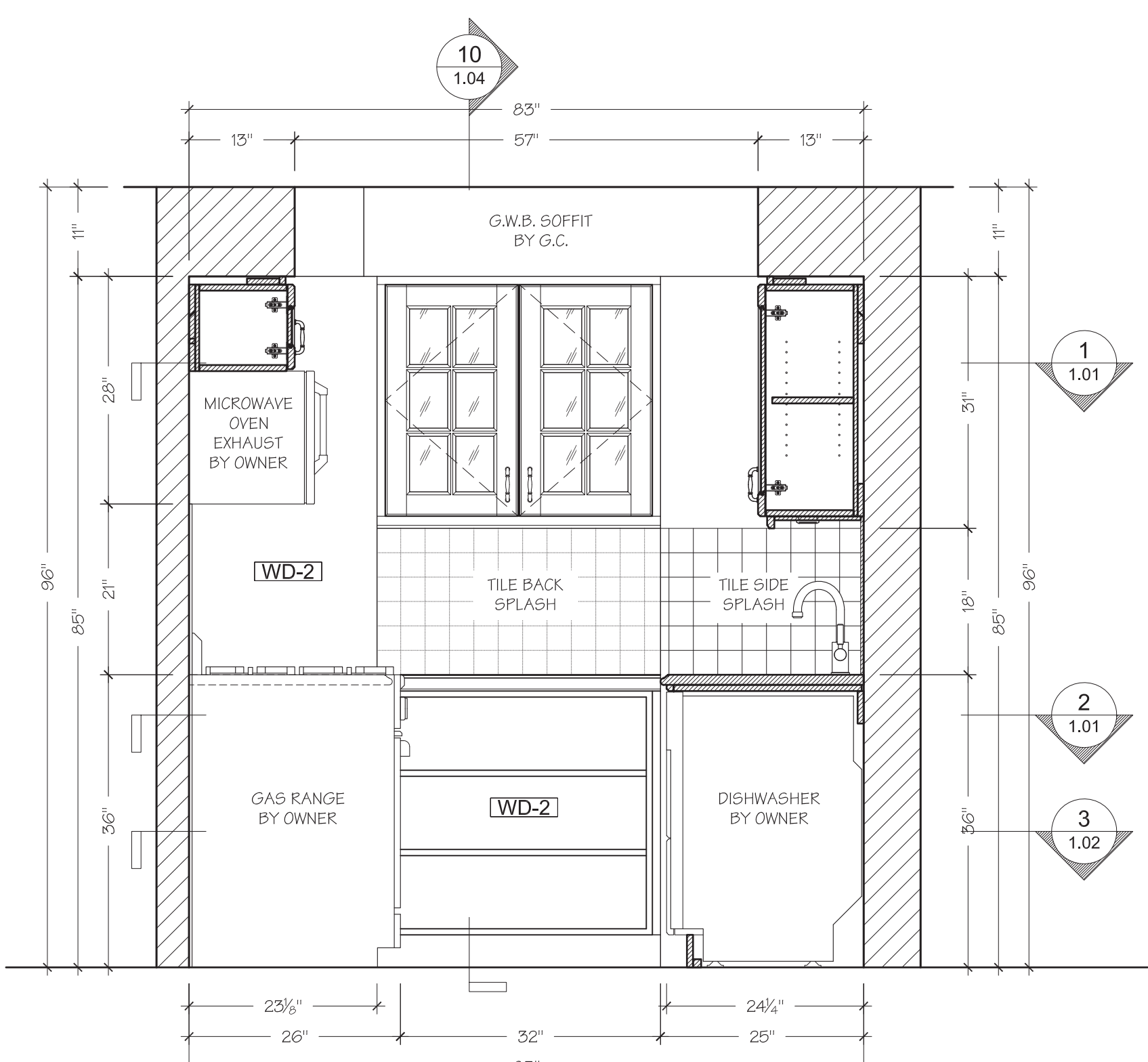
**2 SECTION PLAN**  
SCALE: 1" = 1'-0"  
BASE CABINETS  
KITCHEN



**A ELEVATION**  
SCALE: 3/4" = 1'-0"  
WALL & BASE CAB.  
KITCHEN



**B ELEVATION**  
SCALE: 3/4" = 1'-0"  
ISLAND EXT.  
KITCHEN



**C ELEVATION**  
SCALE: 3/4" = 1'-0"  
GLASS CABINET  
KITCHEN

**MATERIALS**

WD-1	SOLID HARD MAPLE WOOD, PLANE SLICED STAINED TO MATCH CUSTOMER'S SAMPLE
WD-2	MAPLE PAINT SLICED VENEER ON MDF CORE STAINED TO MATCH CUSTOMER'S SAMPLE
ML-1	THERMALLY FUSED MELAMINE INTERIORS COLOR TO MATCH EXTERIOR FINISH
GL-1	3" THICK SAFETY GLASS.
ST-1	1 1/2" THICK GRANITE COUNTERTOP. COLOR T.B.D.

**HARDWARE**

H-1	EUROPEAN FULL OVERLAY CONCEALED HINGE: 200 SERIES SALICE C2P6A99 HAFELE # 329.17.507
H-2	MOUNTING PLATE FOR SALICE CONCEALED HINGE. HAFELE # 329.66.615
H-3	UNDERMOUNTED CONCEALED DRAWER SLIDES: TANDEM PLUS BLUMOTION B62H5330C
H-4	5mm X 20mm SHELF PINS STYLE 3001 OUTWATER # SUP-3001-26
H-5	HALOGEN LIGHTING FOR KITCHENS MODEL 3201. OUTWATER # LIT-3201-26D
H-6	TRADITIONAL CABINET DOOR PULL. HAFELE # 125.61.100 ANTIQUE BRASS
H-7	5mm SHELF PINS WITH VINYL CUSHION FOR GLASS SHELVES 282.24.751

**SPECIAL NOTES**

PLEASE NOTE THAT ALL APPLIANCES AND PLUMBING FIXTURES SHOWN ON THESE DRAWINGS ARE GENERIC AND ARE REFLECTING MOST COMMON STANDARD SIZES. APPLIANCES AND PLUMBING FIXTURES MUST BE SELECTED BY OWNER PRIOR TO FABRICATION FOR PROPER FIT AND INSTALLATION PURPOSES.

G.C. TO VERIFY ALL DIMENSION PRIOR TO FABRICATION  
OWNER TO SELECT PULLS OR HANDLES

- Submittals**
1. SHOP/DESIGN DRAWINGS FOR APPROVAL 11/9/10
  2. FOR FABRICATION 02/15/11
  - 3.
  - 4.

<b>Job Name</b>	<b>RESIDENCE</b>
<b>Job Number</b>	EAST STREET APT NEW YORK, NY 10003
<b>Title</b>	KITCHEN
<b>Designer</b>	www.cadcabinets.com
<b>Contractor</b>	CARPENTRY & ROCKING TRAIL BROOK, NY 10573
<b>Scale</b>	AS NOTED
<b>Drawn By</b>	MT 01/12/2011
<b>Job Number</b>	JG122310-81
<b>Page</b>	<b>1.01</b>



MATERIALS	
WD-1	SOLID HARD MAPLE WOOD, PLANE SLICED STAINED TO MATCH CUSTOMER'S SAMPLE
WD-2	MAPLE PAIN SLICED VENEER ON MDF CORE STAINED TO MATCH CUSTOMER'S SAMPLE
ML-1	THERMALLY FUSED MELAMINE INTERIORS COLOR TO MATCH EXTERIOR FINISH
GL-1	3" THICK SAFETY GLASS.
ST-1	1 1/2" THICK GRANITE COUNTERTOP, COLOR T.B.D.

HARDWARE	
H-1	EUROPEAN FULL OVERLAY CONCEALED HINGE: ZOO SERIES SALICE C2P6A99 HAFELE # 329.17.507
H-2	MOUNTING PLATE FOR SALICE CONCEALED HINGE. HAFELE # 329.66.615
H-3	UNDERMOUNTED CONCEALED DRAWER SLIDES: TANDEM PLUS BLUMOTION B62H5330C
H-4	5mm X 20mm SHELF PINS STYLE 3001 OUTWATER # SUP-3001-26
H-5	HALOGEN LIGHTING FOR KITCHENS MODEL 3201. OUTWATER # LIT-3201-26D
H-6	TRADITIONAL CABINET DOOR FULL HAFELE # 125.61.100 ANTIQUE BRASS
H-7	5mm SHELF PINS WITH VINYL CUSHION FOR GLASS SHELVES 282.24.731

**SPECIAL NOTES**

PLEASE NOTE THAT ALL APPLIANCES AND PLUMBING FIXTURES SHOWN ON THESE DRAWINGS ARE GENERIC AND ARE REFLECTING MOST COMMON STANDARD SIZES. APPLIANCES AND PLUMBING FIXTURES MUST BE SELECTED BY OWNER PRIOR TO FABRICATION FOR PROPER FIT AND INSTALLATION PURPOSES.

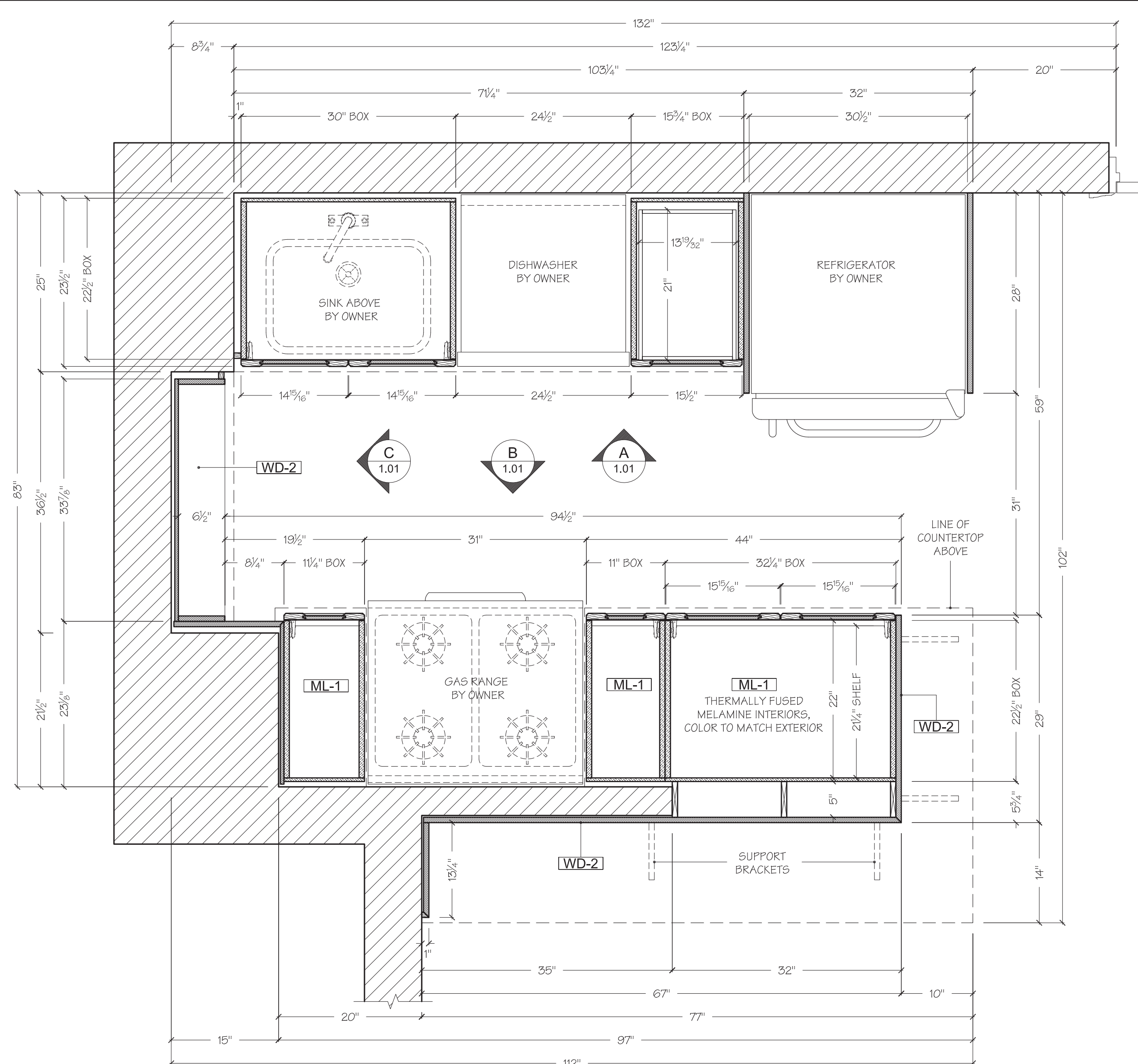
G.C. TO VERIFY ALL DIMENSION PRIOR TO FABRICATION

OWNER TO SELECT PULLS OR HANDLES

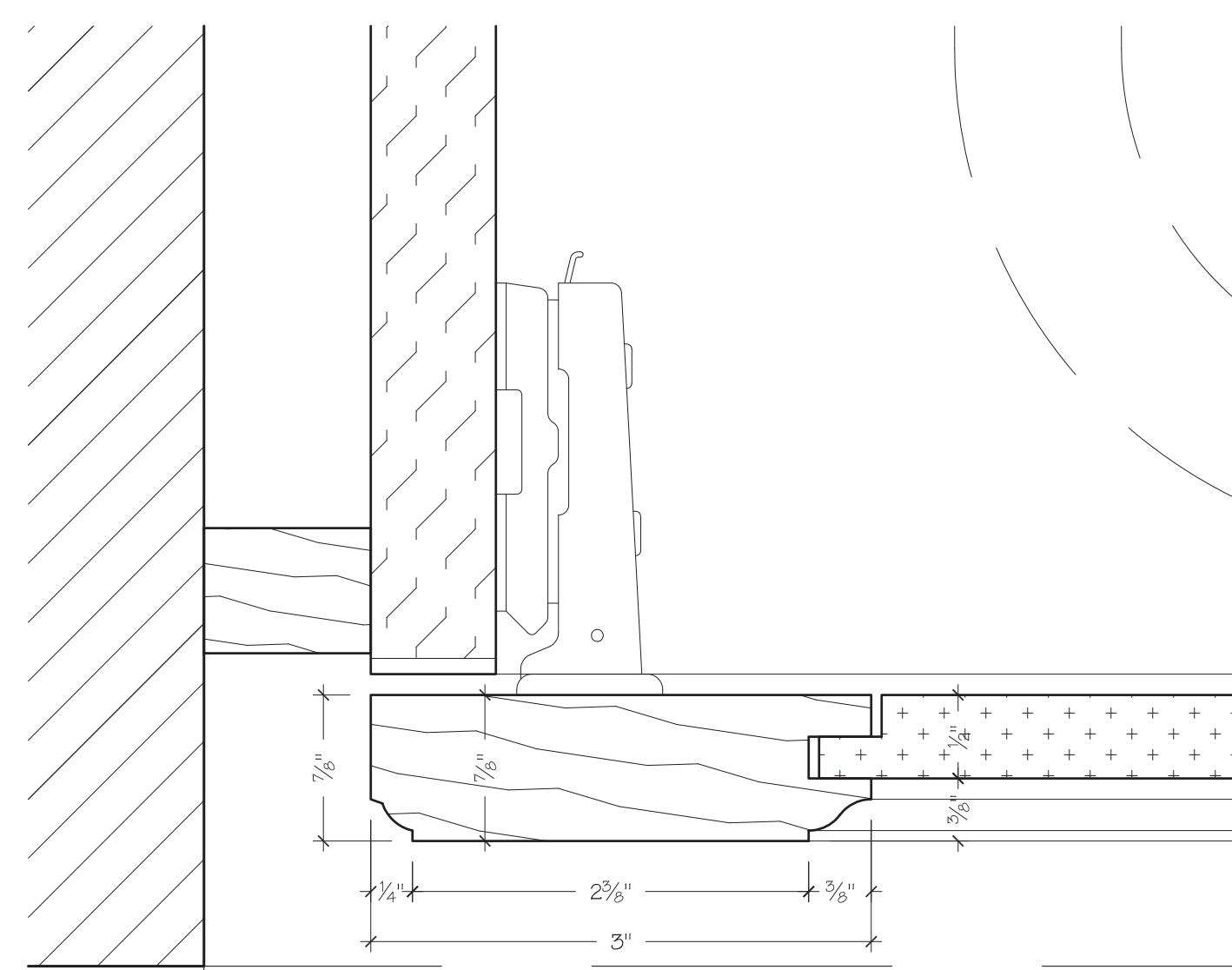
SUBMITTALS	
1.	SHOP/DESIGN DRAWINGS FOR APPROVAL 11/19/10
2.	
3.	
4.	

Job Name	
Title	KITCHEN
Designer	www.cadcabinets.com
Contractor	

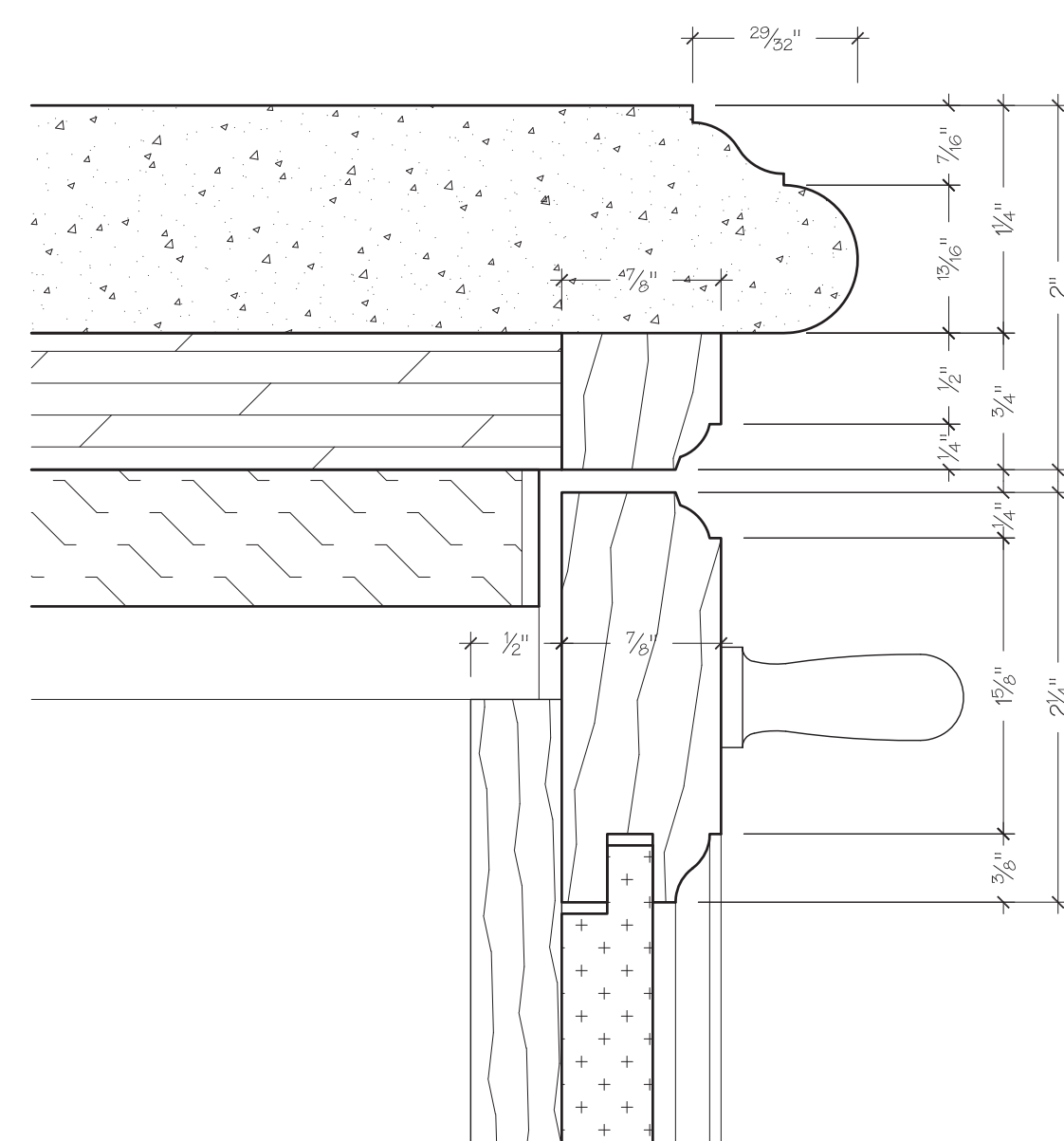
Scale	AS NOTED
Drawn By	MT 01/12/2011
Job Number	JG122310-81
Page	1.02



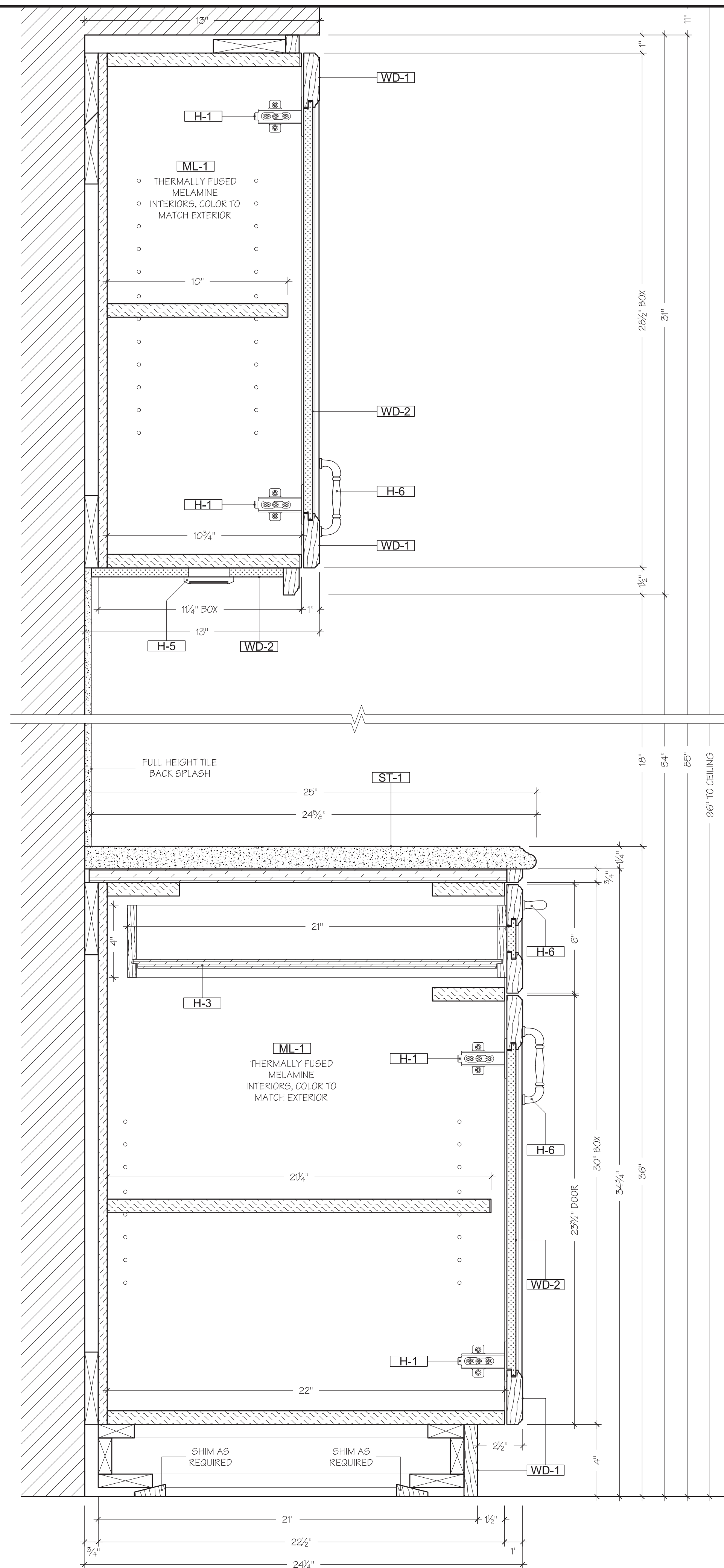
**3 SECTION PLAN**  
SCALE: 1" = 1'- 0"  
BASE CABINETS  
KITCHEN



**11 SECTION DETAILS**  
SCALE: FULL  
DOOR STILE @ WALL SCRIBE  
KITCHEN



**12 SECTION DETAILS**  
SCALE: FULL  
STONE TOP @ DRAWER FRONT  
KITCHEN



**4 SECTION BASE & WALL CABINETS**  
SCALE: 3" = 1'- 0"  
KITCHEN



MATERIALS	
WD-1	SOLID HARD MAPLE WOOD, PLANE SLICED STAINED TO MATCH CUSTOMER'S SAMPLE
WD-2	MAPLE PAINT SLICED VENEER ON MDF CORE STAINED TO MATCH CUSTOMER'S SAMPLE
ML-1	THERMALLY FUSED MELAMINE INTERIORS COLOR TO MATCH EXTERIOR FINISH
GL-1	3" THICK SAFETY GLASS.
ST-1	1 1/2" THICK GRANITE COUNTERTOP, COLOR T.B.D.

HARDWARE	
H-1	EUROPEAN FULL OVERLAY CONCEALED HINGE: ZOO SERIES SALICE C2P6A99 HAFELE # 329.17.507
H-2	MOUNTING PLATE FOR SALICE CONCEALED HINGE. HAFELE # 329.66.615
H-3	UNDERMOUNTED CONCEALED DRAWER SLIDES: TANDEM PLUS BLUMOTION B62H5330C
H-4	5mm X 20mm SHELF PINS STYLE 3001 OUTWATER # SUP-3001-26
H-5	HALOGEN LIGHTING FOR KITCHENS MODEL 3201. OUTWATER # LIT-3201-26D
H-6	TRADITIONAL CABINET DOOR FULL HAFELE # 125.61.100 ANTIQUE BRASS
H-7	5mm SHELF PINS WITH VINYL CUSHION FOR GLASS SHELVES 282.24.731

**SPECIAL NOTES**

PLEASE NOTE THAT ALL APPLIANCES AND PLUMBING FIXTURES SHOWN ON THESE DRAWINGS ARE GENERIC AND ARE REFLECTING MOST COMMON STANDARD SIZES. APPLIANCES AND PLUMBING FIXTURES MUST BE SELECTED BY OWNER PRIOR TO FABRICATION FOR PROPER FIT AND INSTALLATION PURPOSES.

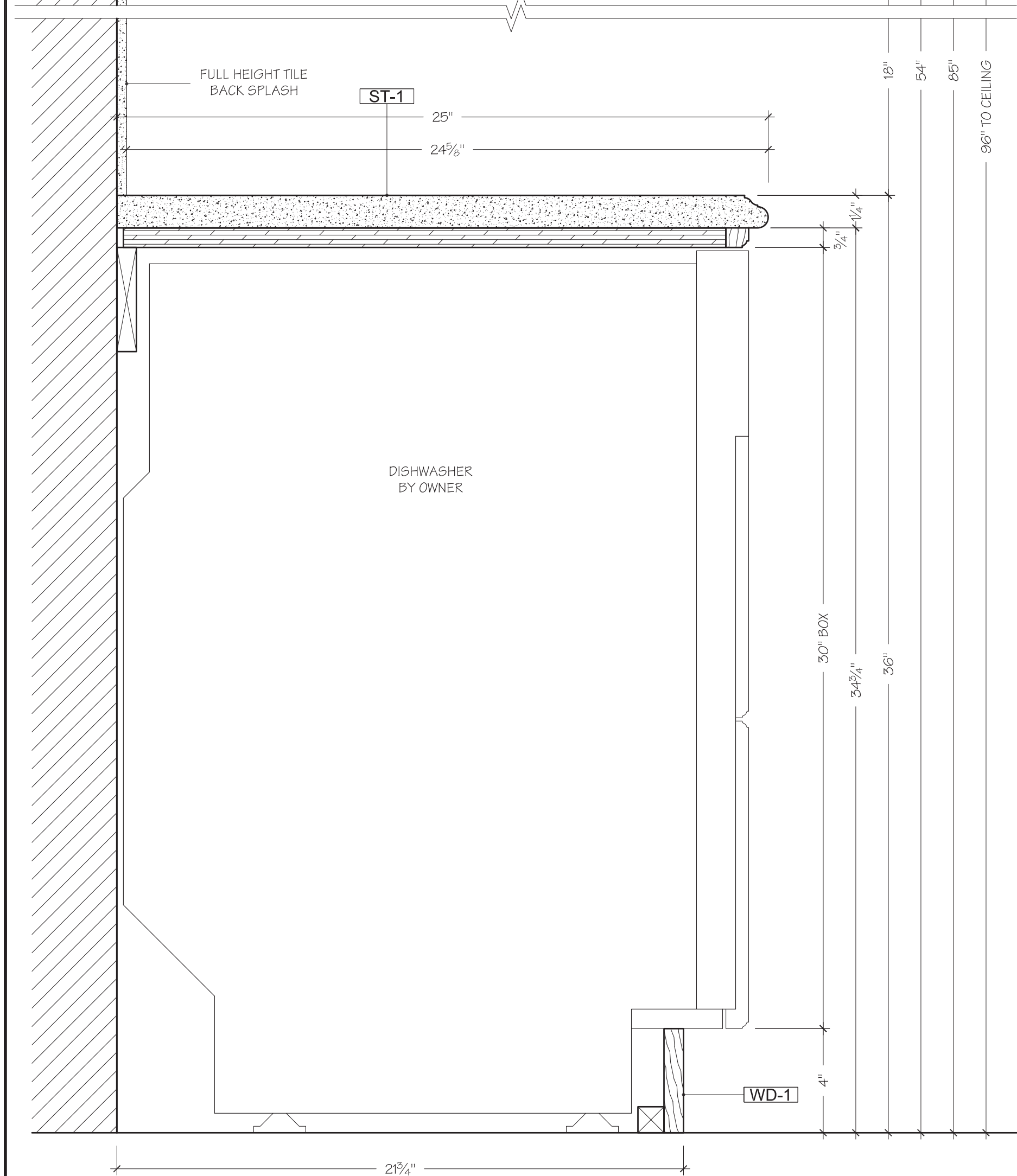
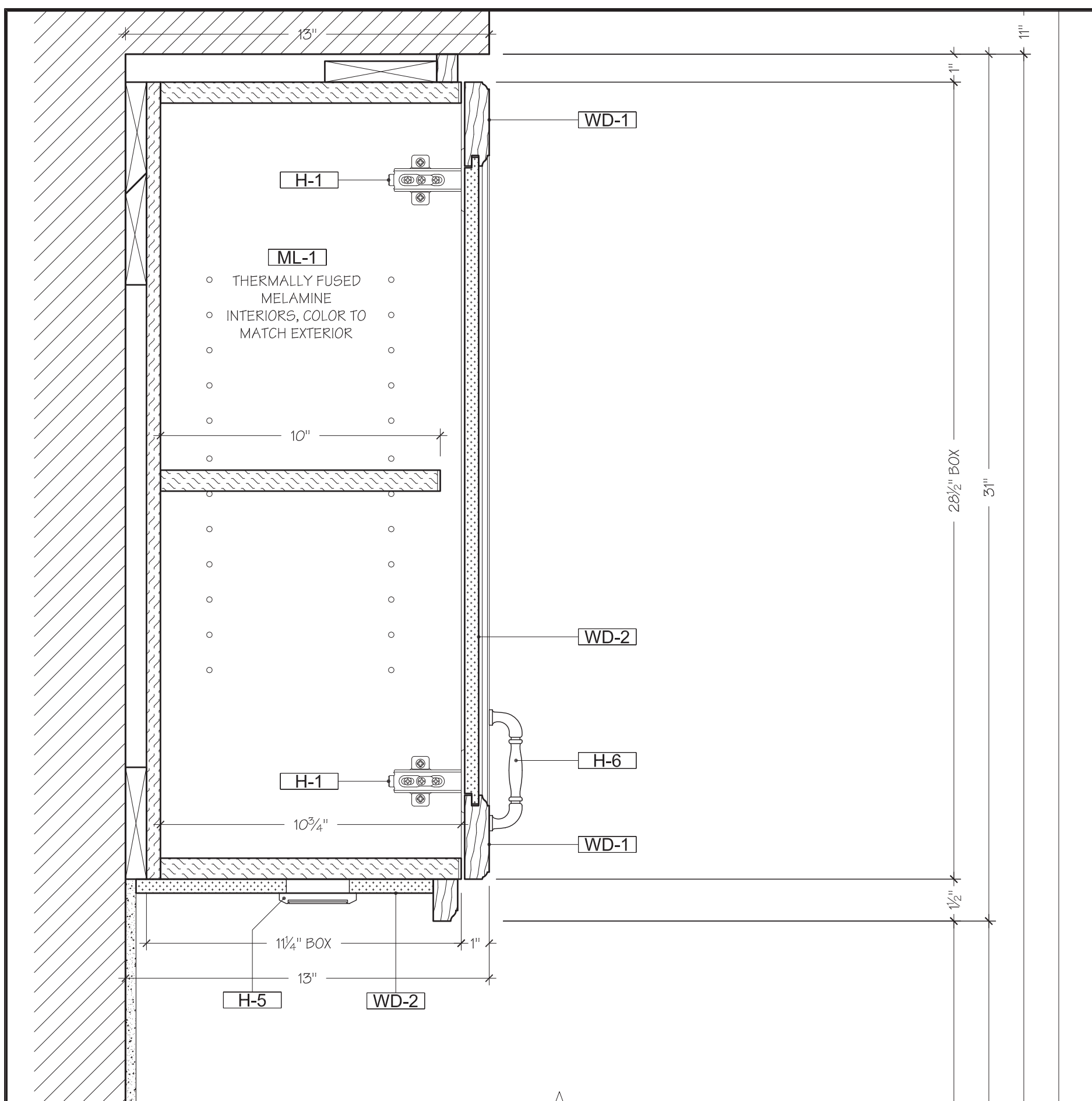
G.C. TO VERIFY ALL DIMENSION PRIOR TO FABRICATION

OWNER TO SELECT PULLS OR HANDLES

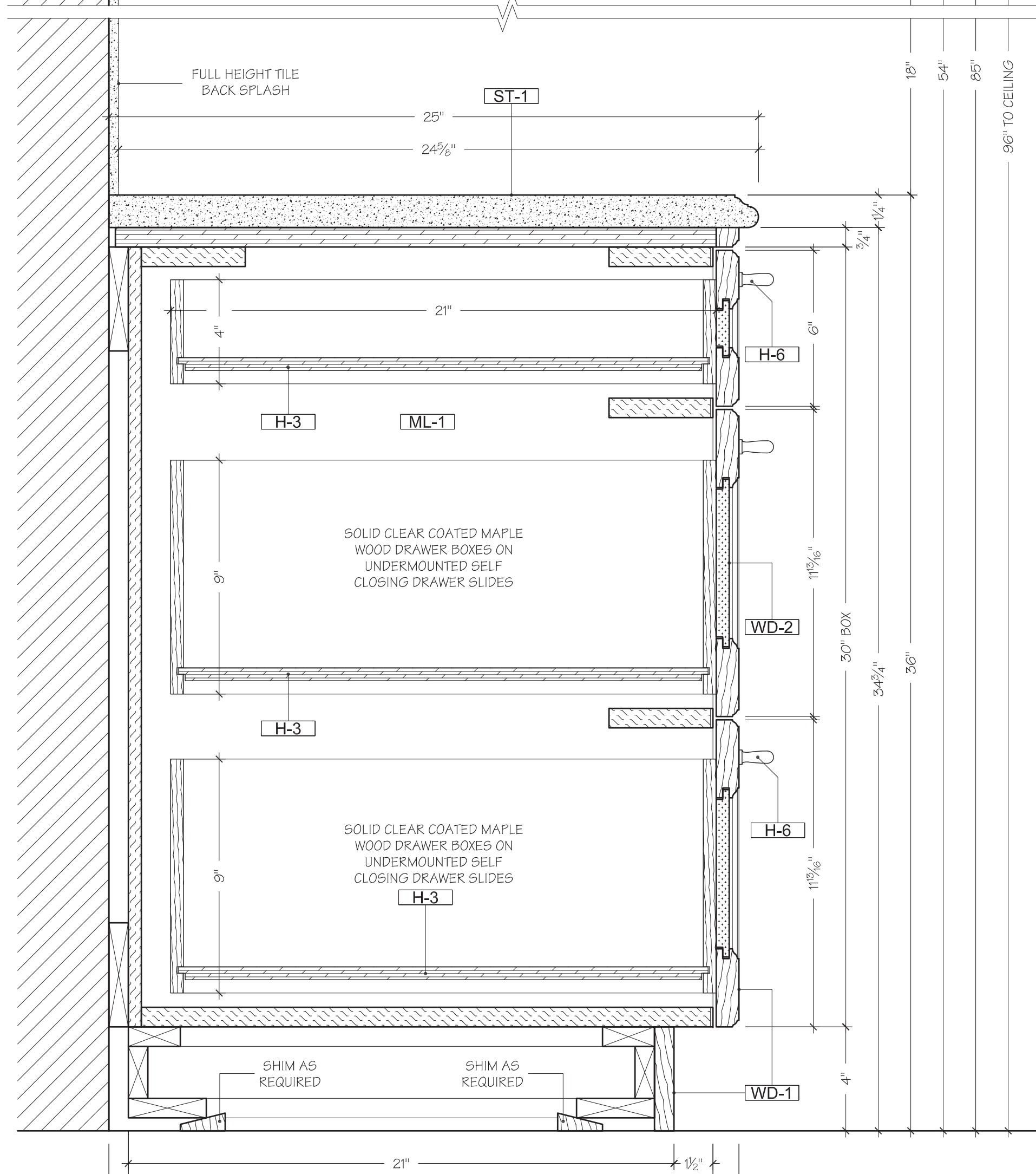
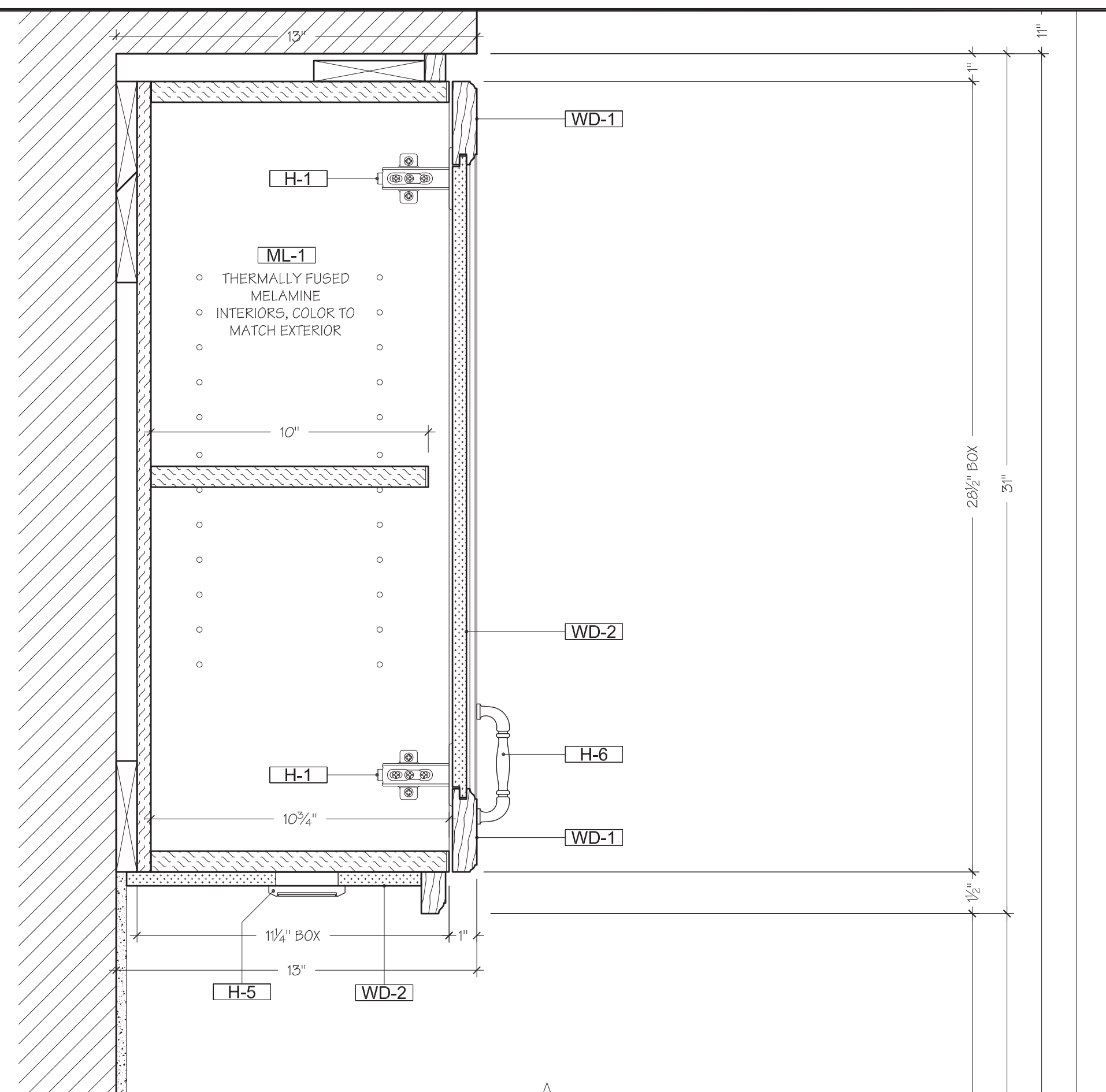
SUBMITTALS	
1.	SHOP/DESIGN DRAWINGS FOR APPROVAL 11/9/10
2.	
3.	
4.	

Job Name	
Title	KITCHEN
Designer	www.cadcabinets.com
Contractor	

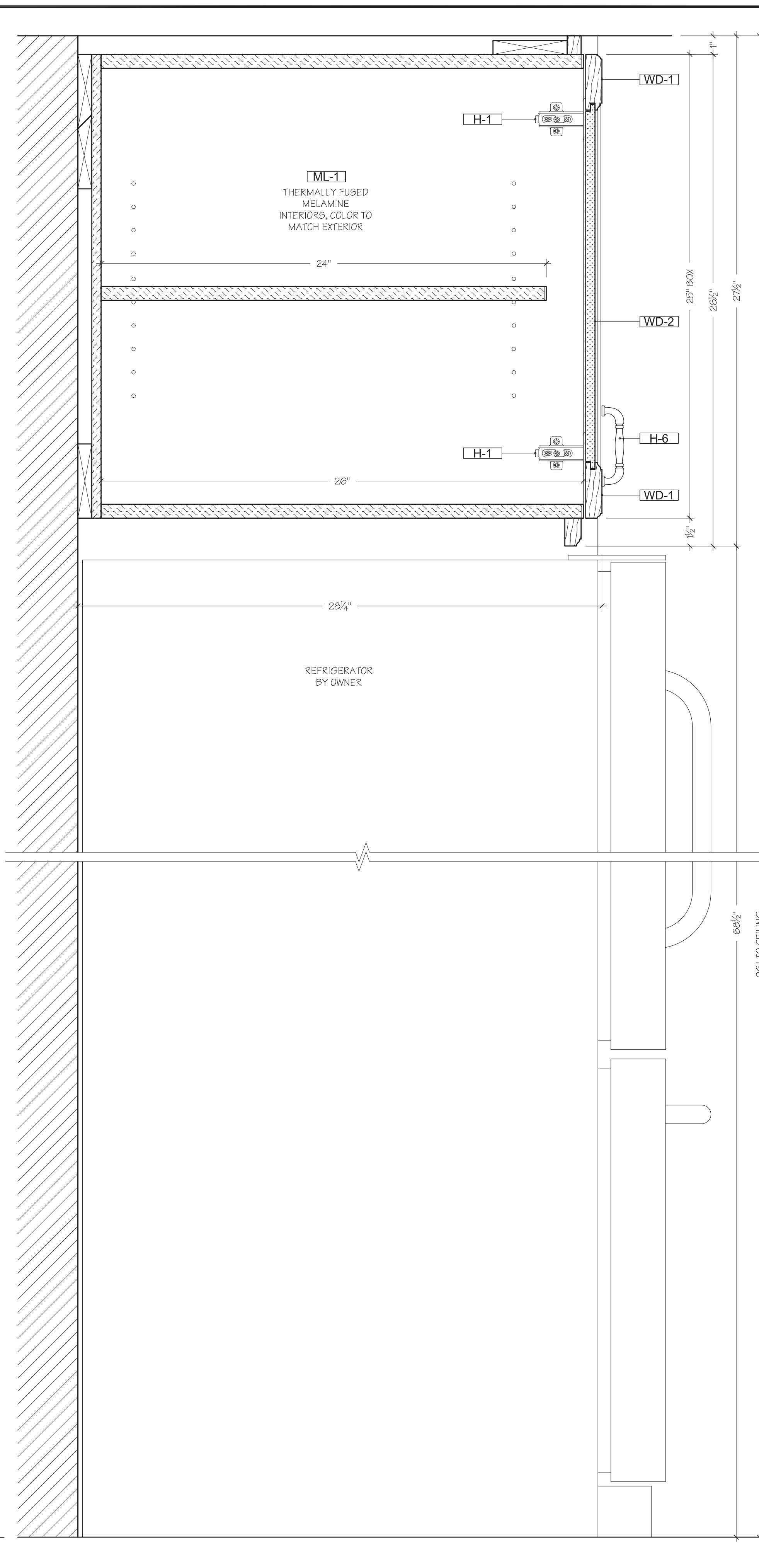
Scale	AS NOTED
Drawn By	MT 01/12/2011
Job Number	JG122310-81
Page	1.03



**5 SECTION** DISHWASHER & WALL CABINET KITCHEN  
SCALE: 3" = 1'-0"



**6 SECTION** BASE & WALL CABINETS KITCHEN  
SCALE: 3" = 1'-0"



**7 SECTION** REFRIGERATOR KITCHEN  
SCALE: 3" = 1'-0"



MATERIALS	
WD-1	SOLID HARD MAPLE WOOD, PLANE SLICED STAINED TO MATCH CUSTOMER'S SAMPLE
WD-2	MAPLE PAIN SLICED VENEER ON MDF CORE STAINED TO MATCH CUSTOMER'S SAMPLE
ML-1	THERMALLY FUSED MELAMINE INTERIORS COLOR TO MATCH EXTERIOR FINISH
GL-1	3" THICK SAFETY GLASS.
ST-1	1 1/2" THICK GRANITE COUNTERTOP. COLOR T.B.D.

HARDWARE	
H-1	EUROPEAN FULL OVERLAY CONCEALED HINGE: 200 SERIES SALICE C2P6A99 HAFELE # 329.17.507
H-2	MOUNTING PLATE FOR SALICE CONCEALED HINGE. HAFELE # 329.66.615
H-3	UNDERMOUNTED CONCEALED DRAWER SLIDES: TANDEM PLUS BLUMOTION B62H5330C
H-4	5mm X 20mm SHELF PINS STYLE 3001 OUTWATER # SUP-3001-26
H-5	HALOGEN LIGHTING FOR KITCHENS MODEL 3201. OUTWATER # LIT-3201-26D
H-6	TRADITIONAL CABINET DOOR FULL HAFELE # 125.61.100 ANTIQUE BRASS
H-7	5mm SHELF PINS WITH VINYL CUSHION FOR GLASS SHELVES 282.24.731

**SPECIAL NOTES**

PLEASE NOTE THAT ALL APPLIANCES AND PLUMBING FIXTURES SHOWN ON THESE DRAWINGS ARE GENERIC AND ARE REFLECTING MOST COMMON STANDARD SIZES. APPLIANCES AND PLUMBING FIXTURES MUST BE SELECTED BY OWNER PRIOR TO FABRICATION FOR PROPER FIT AND INSTALLATION PURPOSES.

G.C. TO VERIFY ALL DIMENSION PRIOR TO FABRICATION  
OWNER TO SELECT PULLS OR HANDLES

SUBMITTALS	
1.	SHOP/DESIGN DRAWINGS FOR APPROVAL 11/9/10
2.	
3.	
4.	

Job Name

Title KITCHEN

Designer www.cadcabinets.com

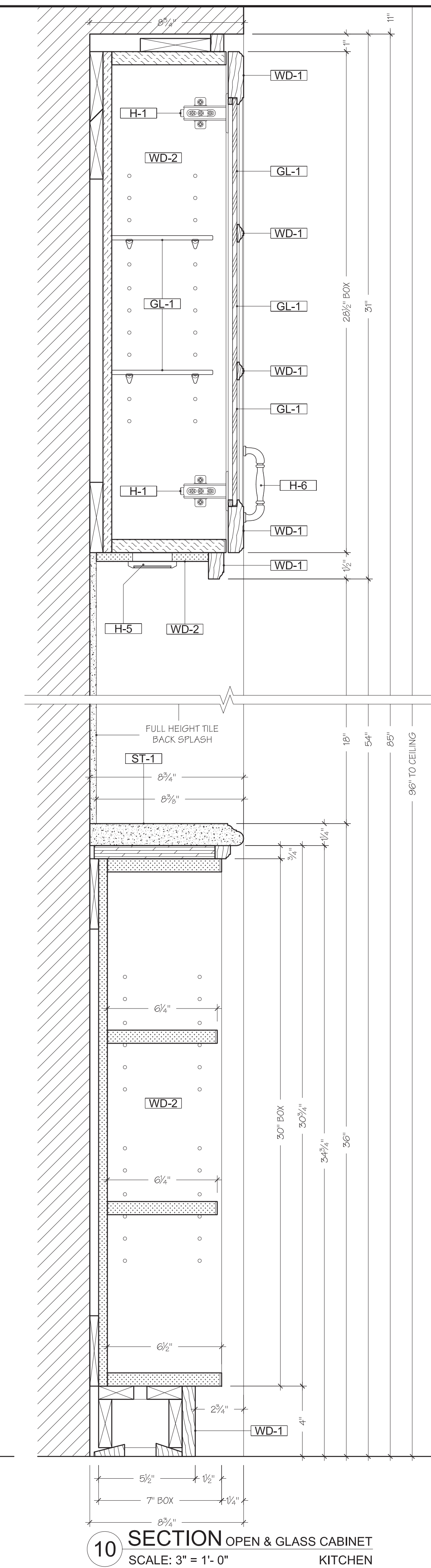
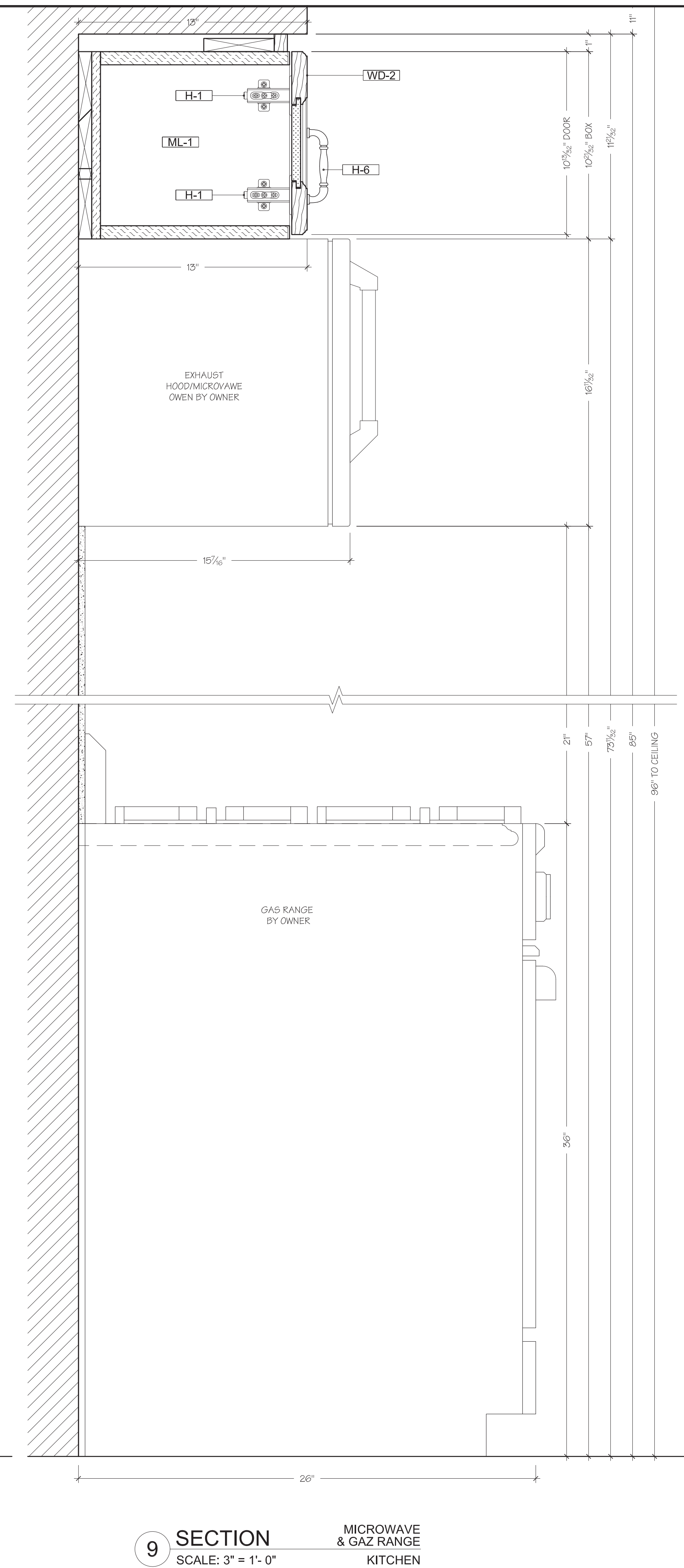
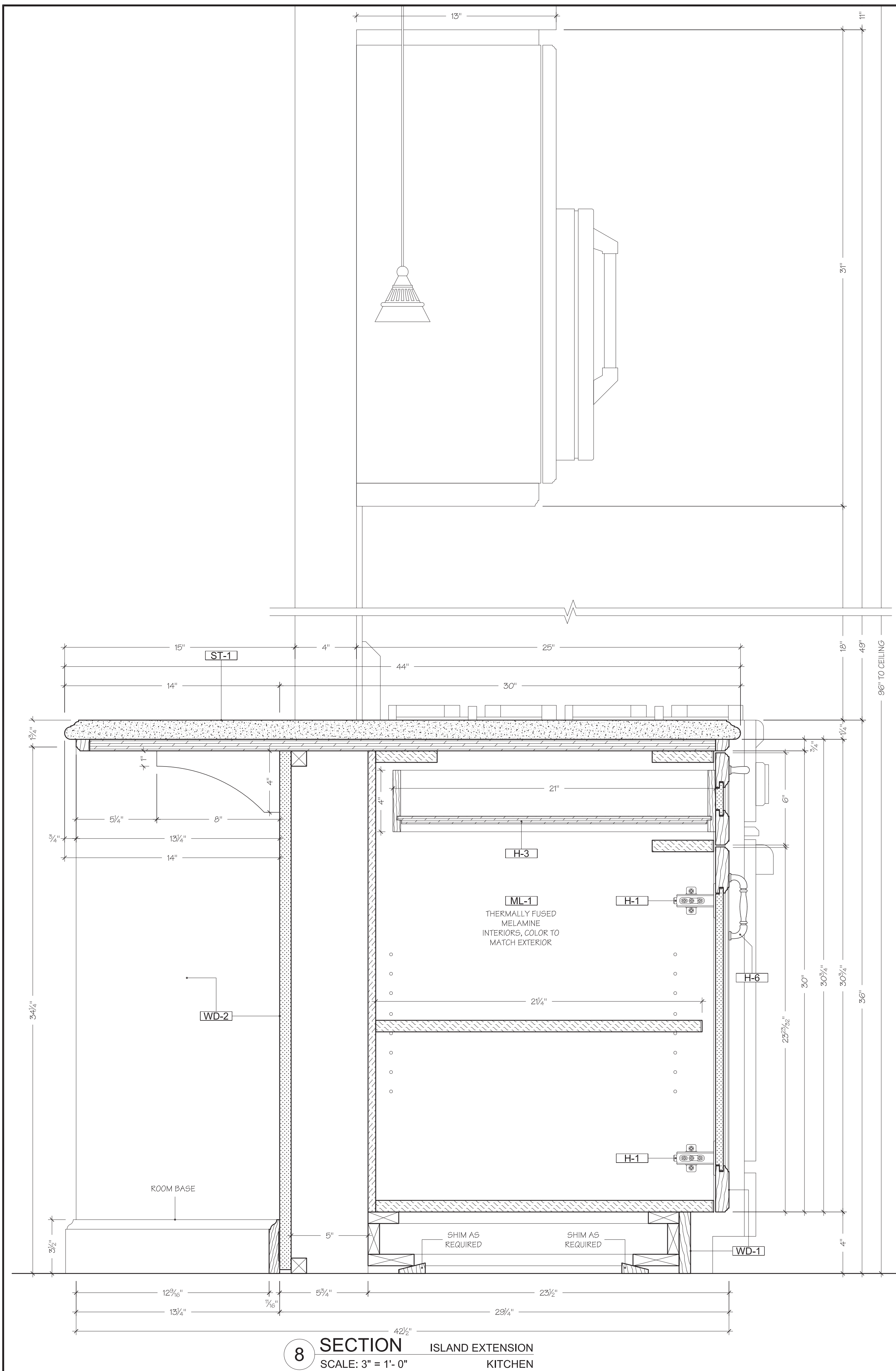
Contractor

Scale AS NOTED

Drawn By MT 01/12/2011

Job Number JG122310-81

Page 1.04



<b>WD-1</b>	SOLID HARD MAPLE WOOD, PLANE SLICED STAINED TO MATCH CUSTOMERS SAMPLE
<b>WD-2</b>	MAPLE PAINT SLICED VENEER ON MDF CORE STAINED TO MATCH CUSTOMERS SAMPLE
<b>ML-1</b>	THERMALLY FUSED MELAMINE INTERIORS COLOR TO MATCH EXTERIOR FINISH
<b>GL-1</b>	3/8" THICK SAFETY GLASS.
<b>ST-1</b>	1 1/2" THICK GRANITE COUNTERTOP. COLOR T.B.D.

**MATERIALS**

<b>H-1</b>	EUROPEAN FULL OVERLAY CONCEALED HINGE: 200 SERIES SALICE C2P6A99 HAFELE # 329.17.507
<b>H-2</b>	MOUNTING PLATE FOR SALICE CONCEALED HINGE. HAFELE # 329.66.615
<b>H-3</b>	UNDERMOUNTED CONCEALED DRAWER SLIDES: TANDEM PLUS BLUMOTION B62H5330C
<b>H-4</b>	5mm X 20mm SHELF PINS STYLE 3001 OUTWATER # SUP-3001-26
<b>H-5</b>	HALOGEN LIGHTING FOR KITCHENS MODEL 3201. OUTWATER # LIT-3201-26D
<b>H-6</b>	TRADITIONAL CABINET DOOR PULL HAFELE # 125.61.100 ANTIQUE BRASS
<b>H-7</b>	5mm SHELF PINS WITH VINYL CUSHION FOR GLASS SHELVES 282.24.731

**HARDWARE**

**SPECIAL NOTES**  
PLEASE NOTE THAT ALL APPLIANCES AND PLUMBING FIXTURES SHOWN ON THESE DRAWINGS ARE GENERIC AND ARE REFLECTING MOST COMMON STANDARD SIZES. APPLIANCES AND PLUMBING FIXTURES MUST BE SELECTED BY OWNER PRIOR TO FABRICATION FOR PROPER FIT AND INSTALLATION PURPOSES.

G.C. TO VERIFY ALL DIMENSION PRIOR TO FABRICATION  
OWNER TO SELECT PULLS OR HANDLES

<b>Submittals</b>	1. SHOP/DESIGN DRAWINGS FOR APPROVAL 11/9/10
	2. FOR FABRICATION 02/15/11
	3
	4.

**Job Name**

**Title** KITCHEN

**Designer** www.cadcabinets.com

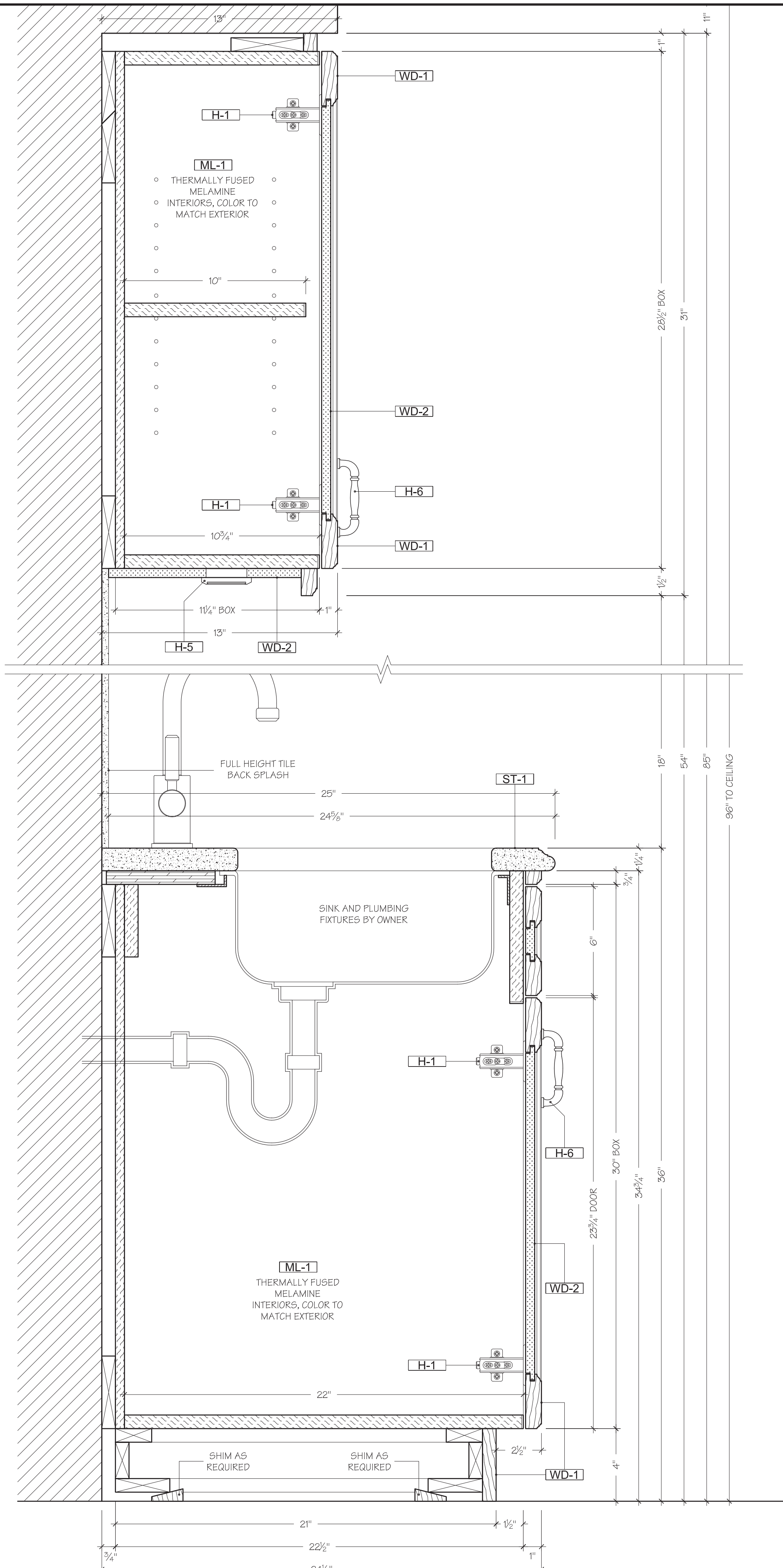
**Contractor**

**Scale** AS NOTED

**Drawn By** MT 01/12/2011

**Job Number** JG122310-81

**Page** 1.05



**11 SECTION** SINK & WALL CABINET  
SCALE: 3" = 1'-0"  
KITCHEN