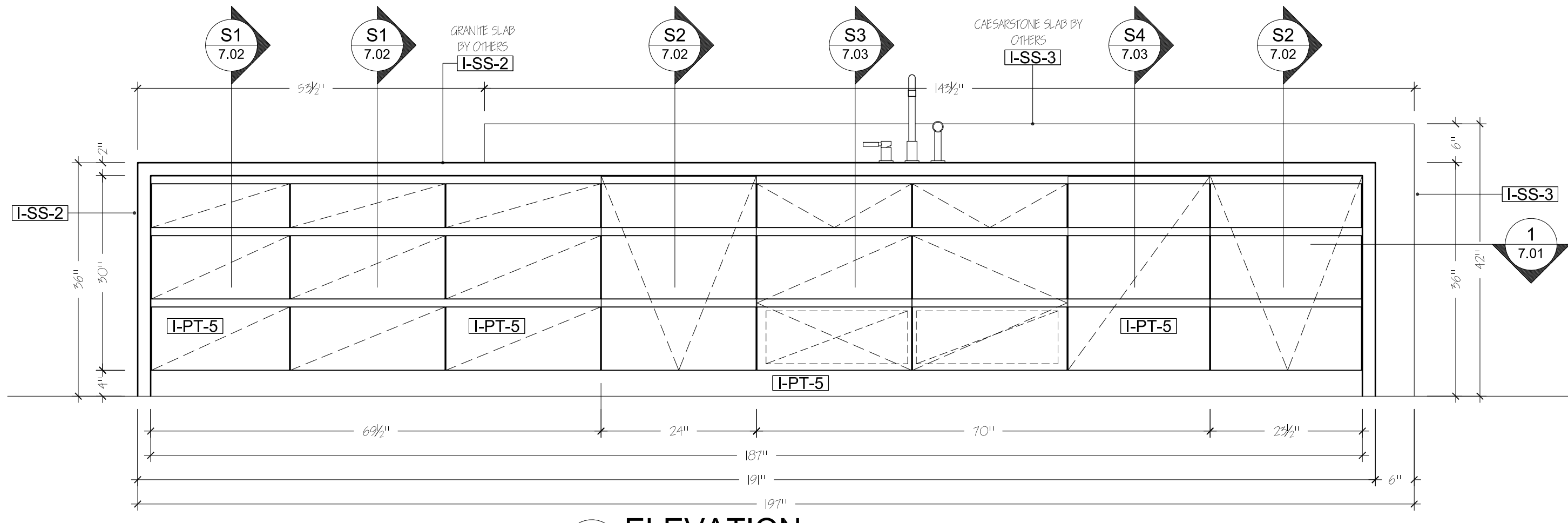
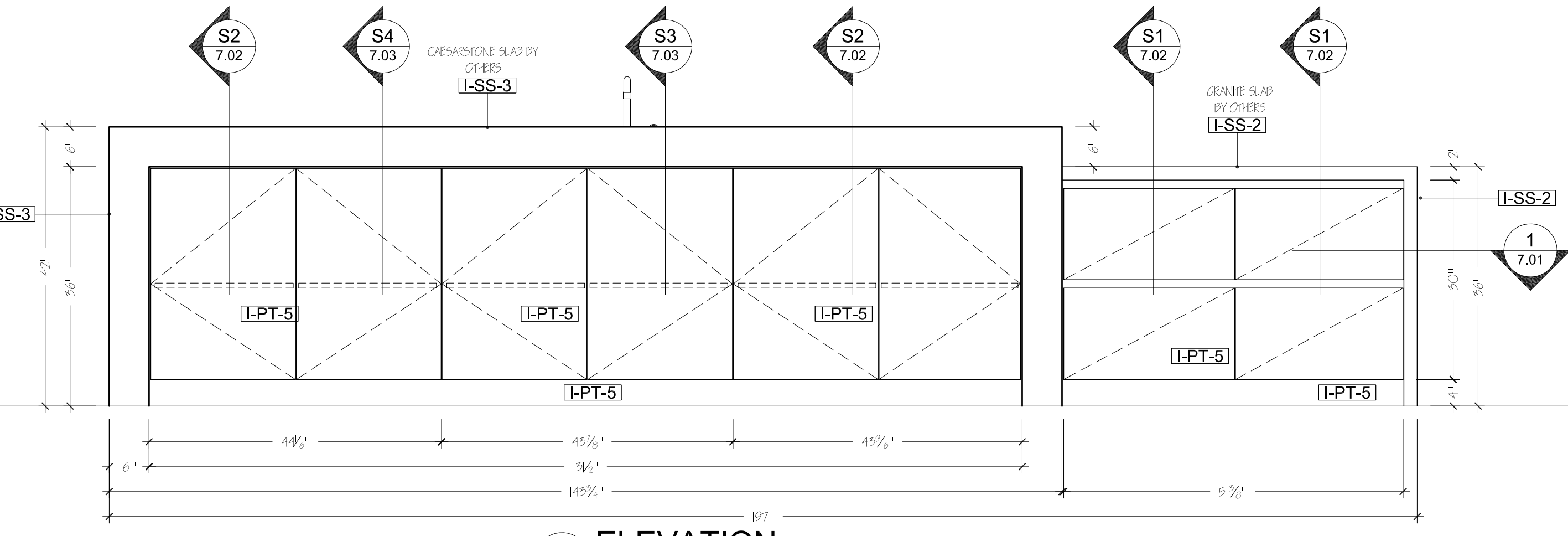


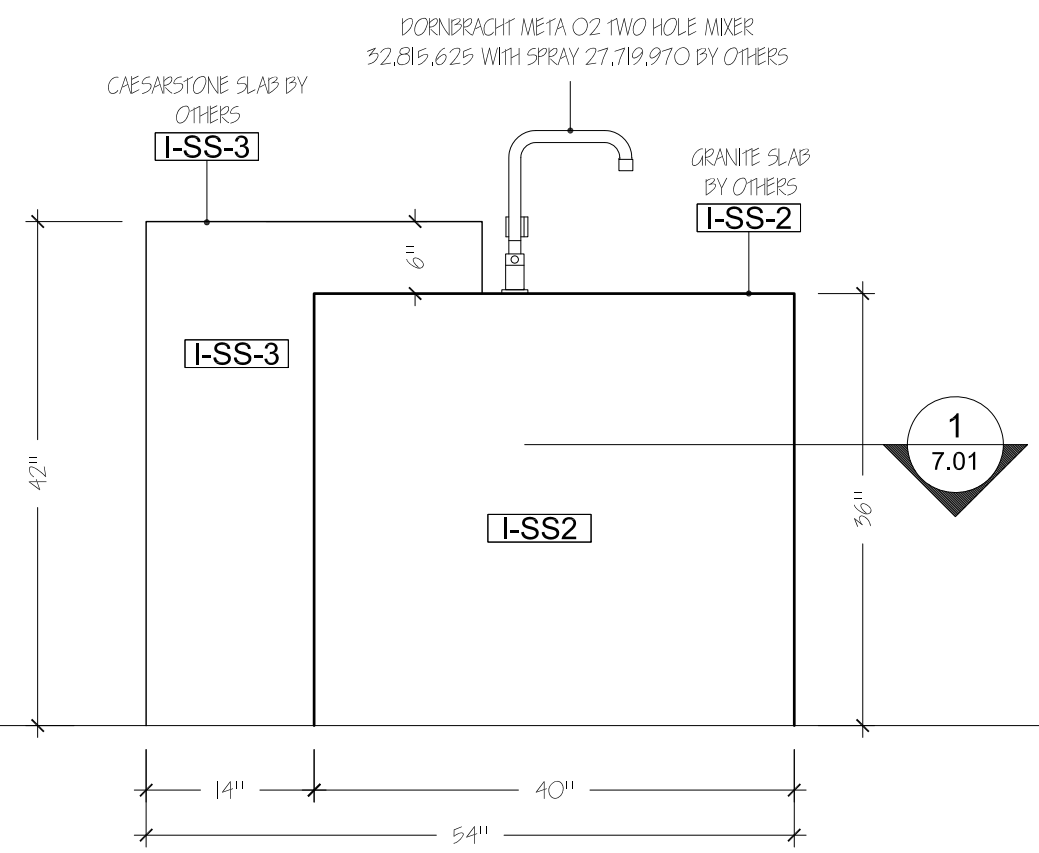
SECTION PLAN 1
 KITCHEN ISLAND
 KITCHEN 213
 SCALE: 1-1/2" = 1'-0"



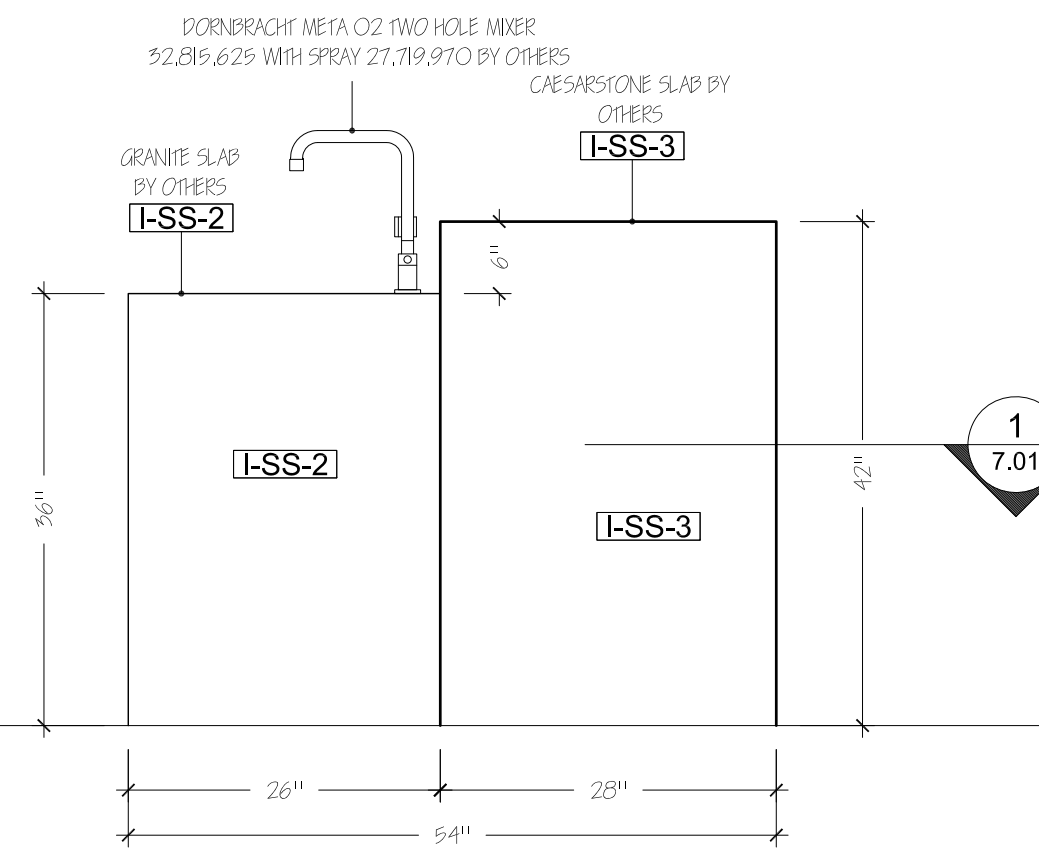
A ELEVATION
 KITCHEN ISLAND
 KITCHEN 213
 SCALE: 3/4" = 1'-0"



B ELEVATION
 KITCHEN ISLAND
 KITCHEN 213
 SCALE: 3/4" = 1'-0"



C ELEVATION
 KITCHEN ISLAND
 KITCHEN 213
 SCALE: 3/4" = 1'-0"



D ELEVATION
 KITCHEN ISLAND
 KITCHEN 213
 SCALE: 3/4" = 1'-0"

MATERIALS	
I-PT-5	HIGH GLOSS LACQUER PAINTED MDF COLOR TBD.
I-SS-2	GRANITE SLAB BY OTHERS 5/4
I-SS-3	CAESARESTONE SLAB BY OTHERS 5/4
WD-1	PREFINISHED MAPLE VENEER ON MDF CORE
WD-2	SHOP GRADE PLYWOOD FOR SLOTOP AND STRETCHERS
WD-3	WALNUT PLAIN SLICED VENEER, VERTICAL GRAIN

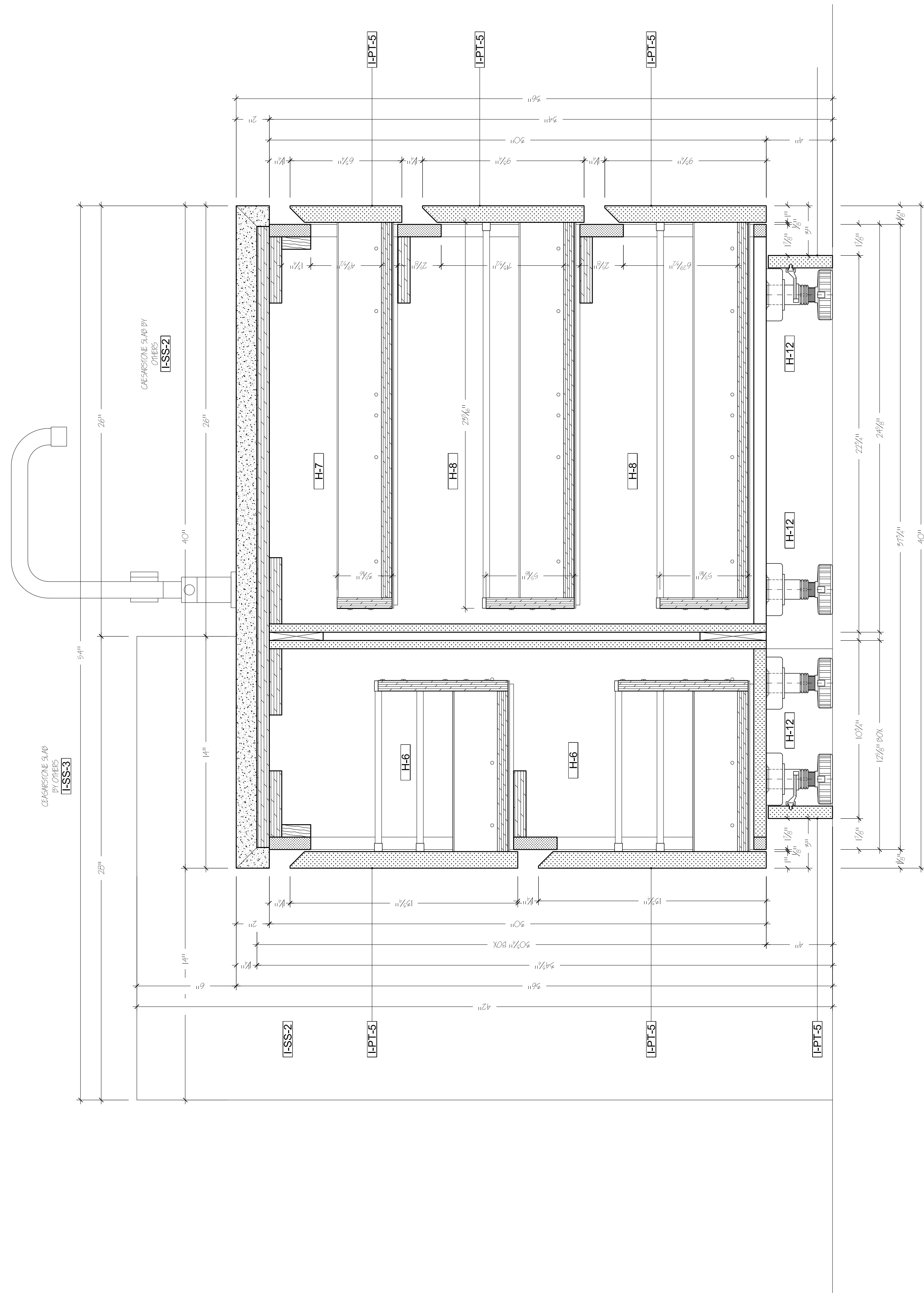
HARDWARE	
H-1	SALICE FULL OVERLAY CONCEALED EUROPEAN HINGE 52917.507
H-5	TANDEMBOX PLUS PLUMOTION "M" 450 18" DRAWER RUNNERS
H-6	TANDEMBOX PLUS PLUMOTION "M" 450 18" DRAWER RUNNERS
H-7	TANDEMBOX PLUS PLUMOTION "M" 600 24" DRAWER RUNNERS
H-8	TANDEMBOX PLUS PLUMOTION "M" 600 24" DRAWER RUNNERS
H-9	TANDEMBOX PLUS PLUMOTION "M" 450 18" DRAWER RUNNERS
H-10	ITEM #. 90915-999 KV USGIB-2-SOPT RASH CAN DOUBLE, BOTTOM MOUNTED, 50 QUART, STEEL, FROSTED NICKEL
H-11	SINK FRONT 1L1-OUT SPRONGE TRAY, REV-A-SHELF SLIM SERIES WITH EURO HINGE INSTALLATION
H-12	HAFEL 4" ADJUSTABLE LEGS 697.59.300
H-14	HAFEL TOUCH LATCH

SPECIAL NOTES
 PLEASE NOTE ALL DIMENSIONS REFLECTED ON THIS DRAWING ARE BASED ON ARCHITECTURAL PLANS AND DETAILS AND ARE SUBJECT OF VERIFICATION IN FIELD PRIOR OF MANUFACTURING AND INSTALLATION.

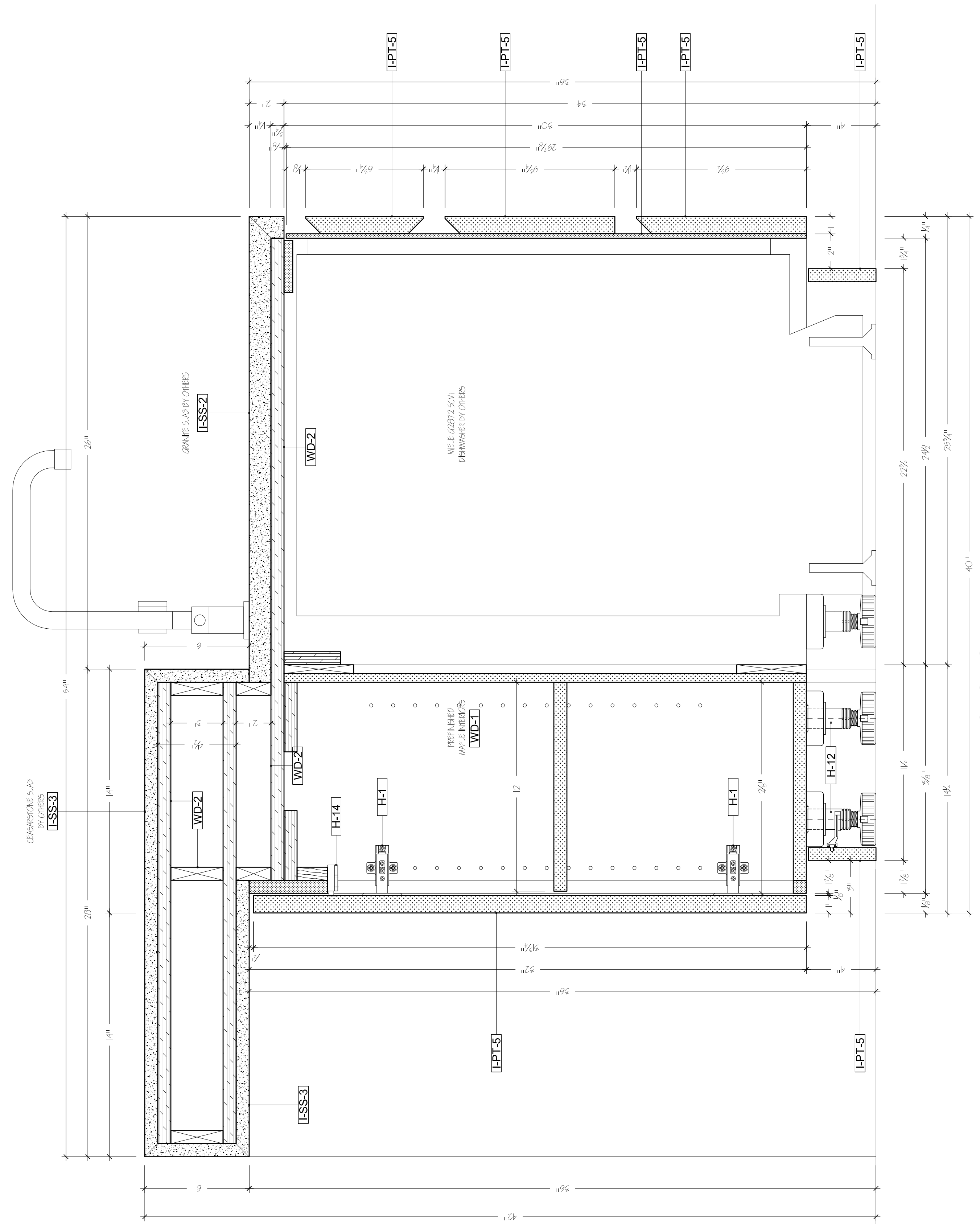
SUBMITTAL		
DATE:	BY:	FOR:
05/02/2011	MT	SHOP DRAWINGS FOR APPROVAL

REVISIONS		
DATE:	BY:	FOR:
06/25/2011	MB	FABRICATION

PROJECT:		
PRIVATE RESIDENCE		
125 WEST 12 5H STREET NEW YORK, NEW YORK 10069		
TITLE: KITCHEN ISLAND 213		
DESIGNER: WORKSHOP / APD LLC 555 EIGHT AVENUE, 5F, 15C09 NEW YORK, NEW YORK 10018		
CONTRACTOR: MENTORS CONSTRUCTION LLC NEW YORK, NEW YORK		
DRAWN BY: MT	DATE: 05/02/11	PAGE:
SCALE: AS NOTED	JOB NO: 10-04208-11	7.01



S1 SECTION KITCHEN ISLAND
 KITCHEN 213
 SCALE: 3" = 1'-0"



S2 SECTION KITCHEN ISLAND
 KITCHEN 213
 SCALE: 3" = 1'-0"

MATERIALS	
[LPT-5]	HIGH GLOSS LACQUER PAINTED MDF COLOR TBD.
[L-SS-2]	GRANITE SLAB BY OTHERS 5/4
[L-SS-3]	CAESARSTONE SLAB BY OTHERS 5/4
[WD-1]	REFINISHED MAPLE VENEER ON MDF CORE
[WD-2]	SHOP GRADE PLYWOOD FOR SLETOP AND STRETCHERS
[WD-3]	WALNUT PLAIN SLICED VENEER, VERTICAL GRAIN

HARDWARE	
[H-1]	SALICE FULL OVERLAY CONCEALED EUROPEAN HINGE 52917.507
[H-5]	TANDEMBOX PLUS PLUMOTION "M" 450 18" DRAWER RUNNERS
[H-6]	TANDEMBOX PLUS PLUMOTION "M" 450 18" DRAWER RUNNERS
[H-7]	TANDEMBOX PLUS PLUMOTION "M" 600 24" DRAWER RUNNERS
[H-8]	TANDEMBOX PLUS PLUMOTION "M" 600 24" DRAWER RUNNERS
[H-9]	TANDEMBOX PLUS PLUMOTION "M" 450 18" DRAWER RUNNERS
[H-10]	ITEM #: 909JLS955 KV USCLB 2-50PT TRASH CAN DOUBLE BOTTOM MOUNTED, 60 QUART, STEEL, FROSTED NICKEL
[H-11]	SINK FRONT OUF-OUT SPONGE TRAY, REV-A-SHELF SLIM SERIES WITH EURO HINGE INSTALLATION
[H-12]	HAFFLE 4" ADJUSTABLE LEGS 697.59.300
[H-14]	HAFFLE TOUCH LATCH

SPECIAL NOTES
 PLEASE NOTE ALL DIMENSIONS REFLECTED ON THIS DRAWING ARE BASED ON ARCHITECTURAL PLANS AND DETAILS AND ARE SUBJECT OF VERIFICATION IN FIELD PRIOR OF MANUFACTURING AND INSTALLATION.

SUBMITTAL	
DATE:	BY: FOR:
05/02/2011	MT SHOP DRAWINGS FOR APPROVAL

REVISIONS	
DATE:	BY: FOR:
06/25/2011	MB FABRICATION

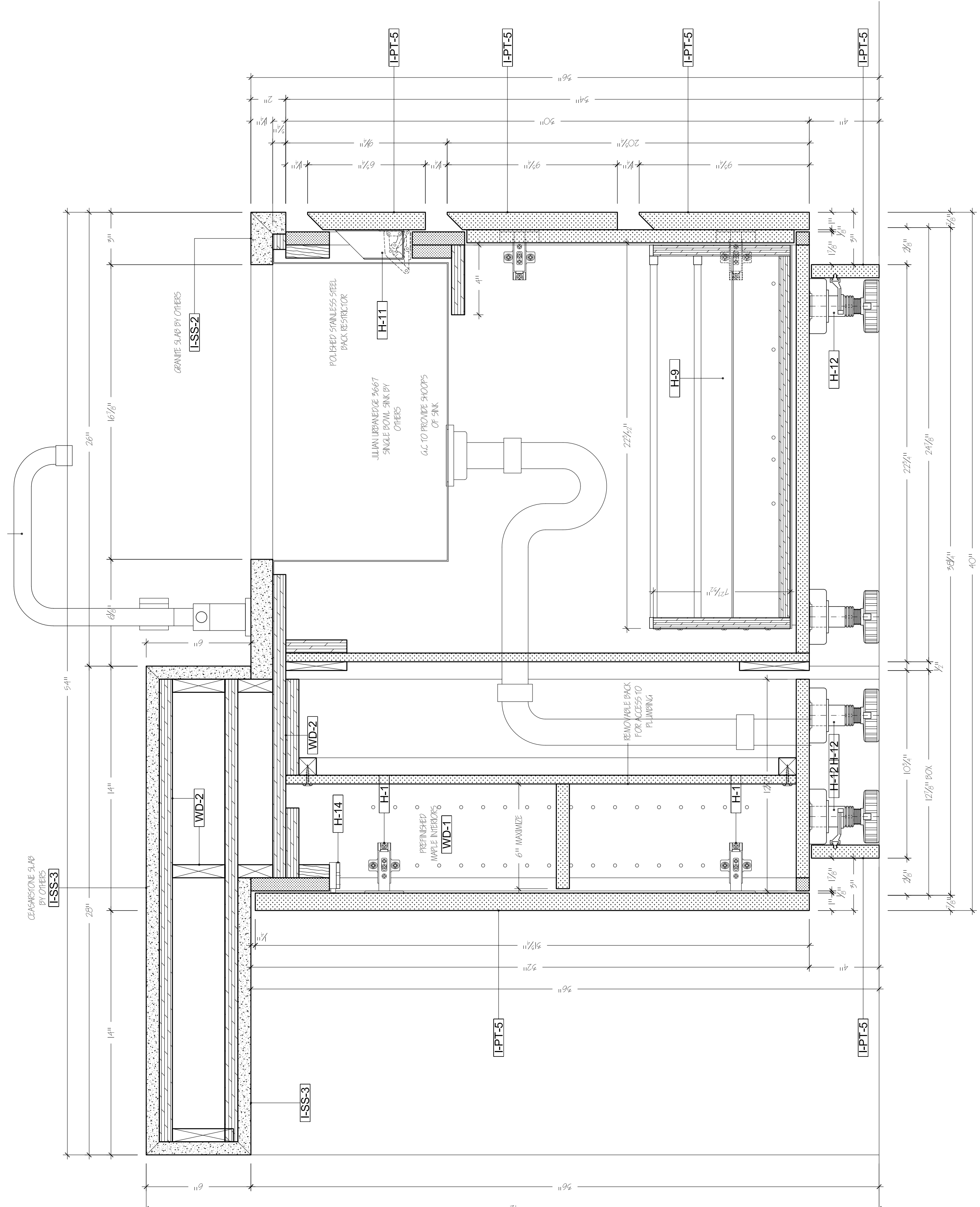
PROJECT:
PRIVATE RESIDENCE
 125 WEST 12 5H STREET
 NEW YORK, NEW YORK 10069

TITLE: KITCHEN ISLAND 213

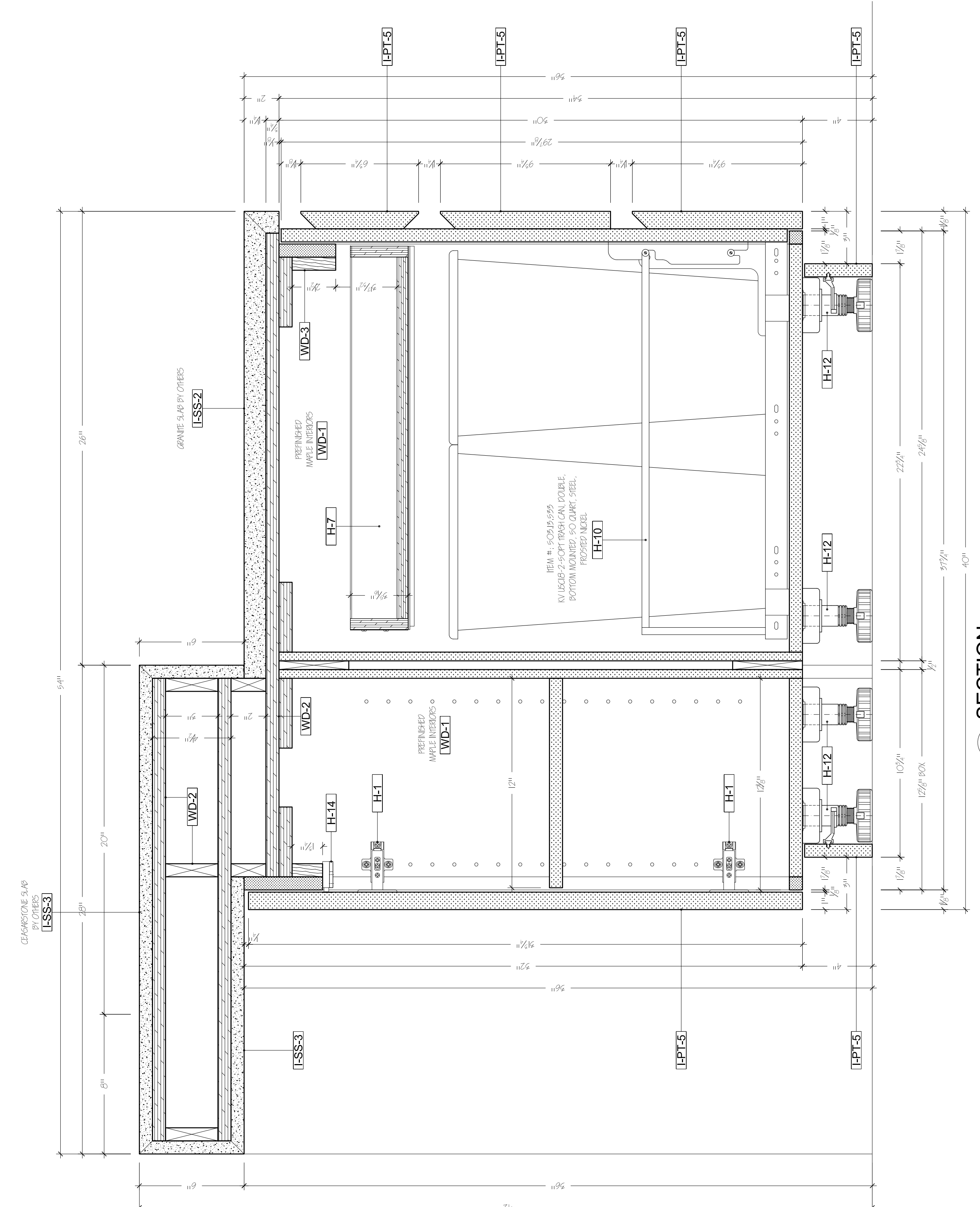
DESIGNER:
 WORKSHOP / APG LLC
 555 EIGHT AVENUE, 5F, 1509
 NEW YORK, NEW YORK 10018

CONTRACTOR:
 MENTORS CONSTRUCTION LLC
 NEW YORK, NEW YORK

DRAWN BY:	MT	DATE:	05/02/11	PAGE:	7.02
SCALE:	AS NOTED	JOB NO.:	10-040208-11		



S3 SECTION
 KITCHEN ISLAND
 KITCHEN 213
 SCALE: 3" = 1'-0"



S4 SECTION
 KITCHEN ISLAND
 KITCHEN 213
 SCALE: 3" = 1'-0"

MATERIALS	
L-PT-5	HIGH GLOSS LACQUER PAINTED MDF COLOR TBD.
L-SS-2	GRANITE SLAB BY OTHERS 5/4
L-SS-3	CESARONITE SLAB BY OTHERS 5/4
WD-1	REFINISHED MAPLE VENEER ON MDF CORE
WD-2	SHOP GRADE PLYWOOD FOR SLETOP AND STRETCHERS
WD-3	WALNUT PLAIN SLICED VENEER, VERTICAL GRAIN.

HARDWARE	
H-1	SALICE FULL OVERLAY CONCEALED EUROPEAN HINGE 52917.507
H-5	TANDEMBOX PLUS PLUMOTION "M" 450 18" DRAWER RUNNERS
H-6	TANDEMBOX PLUS PLUMOTION "M" 450 18" DRAWER RUNNERS
H-7	TANDEMBOX PLUS PLUMOTION "M" 600 24" DRAWER RUNNERS
H-8	TANDEMBOX PLUS PLUMOTION "M" 600 24" DRAWER RUNNERS
H-9	TANDEMBOX PLUS PLUMOTION "M" 450 18" DRAWER RUNNERS
H-10	ITEM #. 50215.555 KV USCIB-2-50PT TRASH CAN DOUBLE BOTTOM MOUNTED, 50 QUART, STEEL, FROSTED NICKEL
H-11	SINK FRONT TILT-OUT SPRONGE TRAY, REV-A-SHELF SLIM SERIES WITH EURO HINGE INSTALLATION
H-12	HWELLE 4" ADJUSTABLE LEGS 697.59.300
H-14	HWELLE TOUCH LATCH

SPECIAL NOTES
 PLEASE NOTE ALL DIMENSIONS REFLECTED ON THIS DRAWING ARE BASED ON ARCHITECTURAL PLANS AND DETAILS AND ARE SUBJECT OF VERIFICATION IN FIELD PRIOR OF MANUFACTURING AND INSTALLATION.

SUBMITTAL	
DATE:	BY: FOR:
05/02/2011	MT SHOP DRAWINGS FOR APPROVAL

REVISIONS	
DATE:	BY: FOR:
06/25/2011	MB FABRICATION

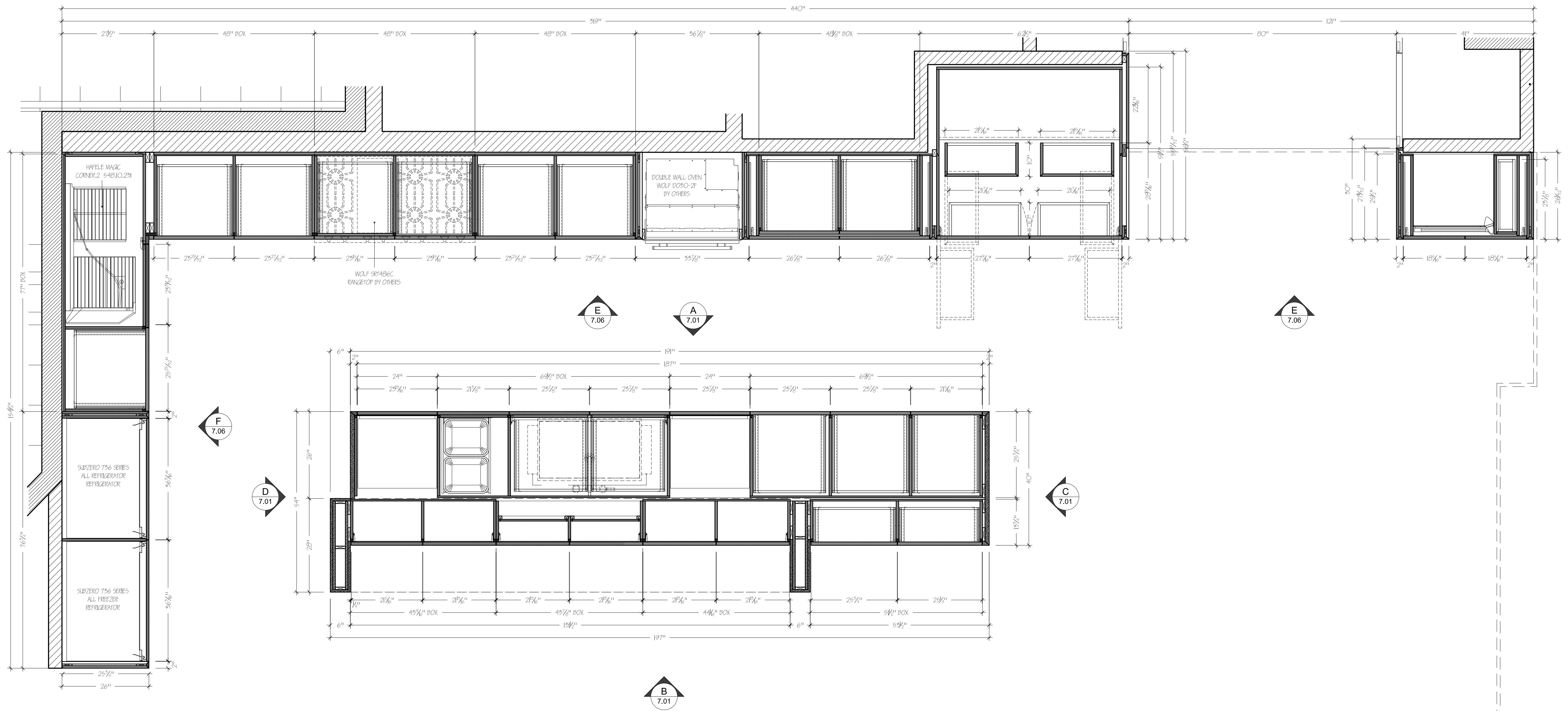
PROJECT:
PRIVATE RESIDENCE
 125 WEST 12 5H STREET
 NEW YORK, NEW YORK 10069

TITLE: KITCHEN ISLAND 213

DESIGNER:
 WORKSHOP / APD LLC
 555 EIGHT AVENUE, 5F, 1509
 NEW YORK, NEW YORK 10069

CONTRACTOR:
 MENTORS CONSTRUCTION LLC
 NEW YORK, NEW YORK

DRAWN BY: MT	DATE: 05/02/11	PAGE:
SCALE: AS NOTED	JOB NO: 10-042011-1	7.03



SECTION PLAN
 SCALE: 3/4" = 1'-0"
 LOWER LEVEL
 KITCHEN 213

MATERIALS

- [LPT-5]** HIGH GLOSS LACQUER PAINTED MDF COLOR TBD.
- [LSS-2]** GRANITE SLAB BY OTHERS 5/ 4
- [LSS-3]** CRESASTONE SLAB BY OTHERS 5/ 4"
- [WD-1]** PREFINISHED MAPLE VENEER ON MDF CORE
- [WD-2]** SHOP GRADE PLYWOOD FOR SLETOP AND STRETCHERS
- [WD-3]** WALNUT PLAIN SLICED VENEER, VERTICAL GRAIN.

HARDWARE

- [H-1]** SAIJCE FULL OVERLAY CONCEALED EUROPEAN HINGE 52917.507
- [H-5]** TANDEMBOX PLUS PLUMOTION "M" 450 18" DRAWER RUNNERS
- [H-6]** TANDEMBOX PLUS PLUMOTION "M" 450 18" DRAWER RUNNERS
- [H-7]** TANDEMBOX PLUS PLUMOTION "M" 600 24" DRAWER RUNNERS
- [H-8]** TANDEMBOX PLUS PLUMOTION "M" 600 24" DRAWER RUNNERS
- [H-9]** TANDEMBOX PLUS PLUMOTION "M" 450 18" DRAWER RUNNERS
- [H-10]** ITEM #: 90915.999 KV USCIB-2-SOPT TRASH CAN DOUBLE BOTTOM MOUNTED, 60 QUART, STEEL, FROSTED NICKEL
- [H-11]** SINK FRONT 1L-F-OUT SPRONGE TRAY, REV-A-SHELF SLIM SERIES WITH EURO HINGE INSTALLATION
- [H-12]** HAFLE 4" ADJUSTABLE LEGS 697.59.300
- [H-14]** HAFLE TOUCH LATCH

SPECIAL NOTES

PLEASE NOTE ALL DIMENSIONS REFLECTED ON THIS DRAWING ARE BASED ON ARCHITECTURAL PLANS AND DETAILS AND ARE SUBJECT OF VERIFICATION IN FIELD PRIOR OF MANUFACTURING AND INSTALLATION.

SUBMITTAL

DATE: 06/02/2011 BY: MT FOR: SHOP DRAWINGS FOR APPROVAL

REVISIONS

DATE: 06/25/2011 BY: MB FOR: FABRICATION

PROJECT:

PRIVATE RESIDENCE
 125 WEST 12 5H STREET
 NEW YORK, NEW YORK 10069

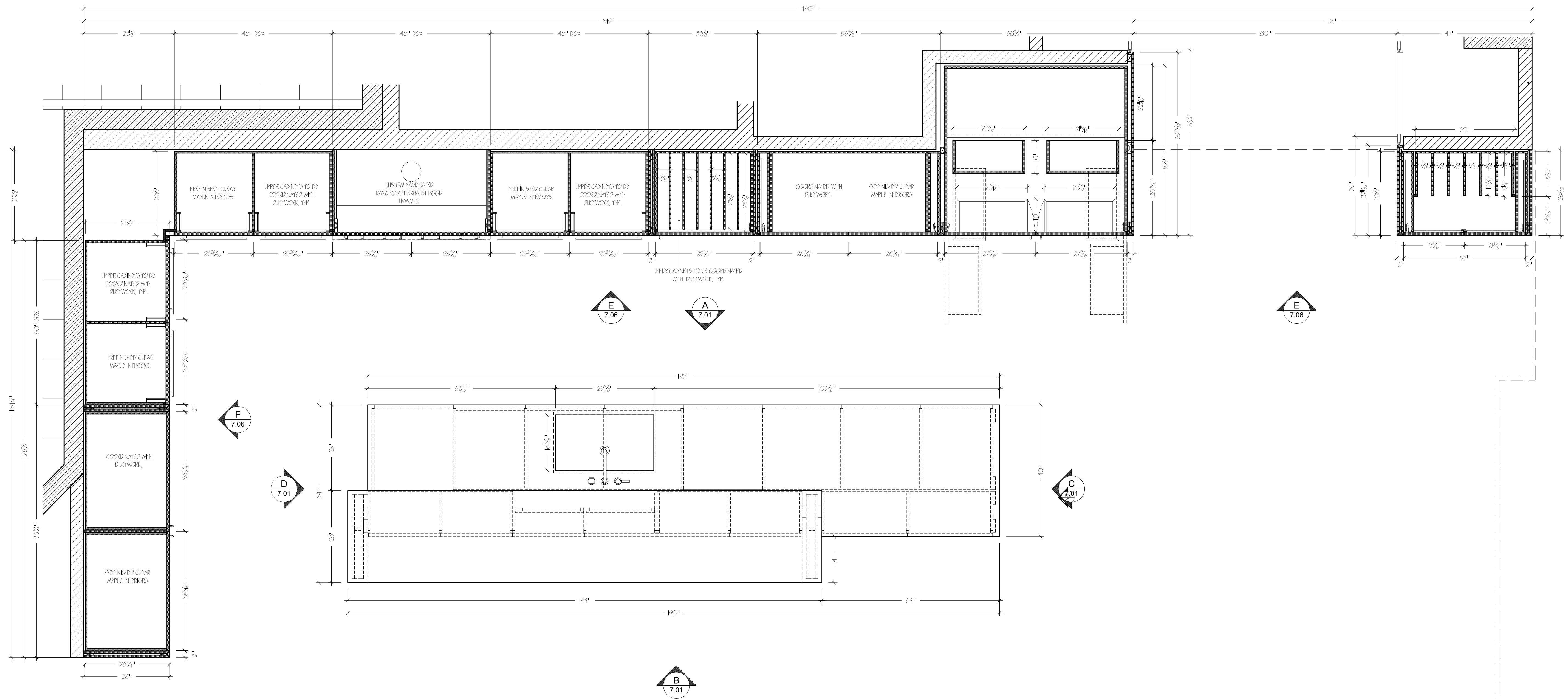
TITLE:

KITCHEN 213
 DESIGNER: WORKSHOP / APG LLC
 555 EIGHT AVENUE, 5F, 1509
 NEW YORK, NEW YORK 10069

CONTRACTOR:

MENTORS CONSTRUCTION LLC
 NEW YORK, NEW YORK

DRAWN BY: MT DATE: 06/15/11 PAGE:
 SCALE: AS NOTED JOB NO: 10-042011-11 **7.04**



3 SECTION PLAN
 SCALE: 3/4" = 1'-0"
 UPPER LEVEL
 KITCHEN 213

MATERIALS

- [LPT-5]** HIGH GLOSS LACQUER PAINTED MDF COLOR TBD.
- [L-SS-2]** GRANITE SLAB BY OTHERS 5/4
- [L-SS-3]** CRESASTONE SLAB BY OTHERS 5/4
- [WD-1]** PREFINISHED MAPLE VENEER ON MDF CORE
- [WD-2]** SHOP GRADE PLYWOOD FOR SLETOP AND STRETCHERS
- [WD-3]** WALNUT PLAIN SLICED VENEER, VERTICAL GRAIN.

HARDWARE

- [H-1]** SALLICE FULL OVERLAY CONCEALED EUROPEAN HINGE 52917.507
- [H-5]** TANDEMBOX PLUS PLUMOTION "M" 450 18" DRAWER RUNNERS
- [H-6]** TANDEMBOX PLUS PLUMOTION "M" 450 18" DRAWER RUNNERS
- [H-7]** TANDEMBOX PLUS PLUMOTION "M" 600 24" DRAWER RUNNERS
- [H-8]** TANDEMBOX PLUS PLUMOTION "M" 600 24" DRAWER RUNNERS
- [H-9]** TANDEMBOX PLUS PLUMOTION "M" 450 18" DRAWER RUNNERS
- [H-10]** ITEM #: 905J5-999 KV USCIB-2-50PT TRASH CAN DOUBLE BOTTOM MOUNTED, 60 QUART, STEEL, FROSTED NICKEL
- [H-11]** SINK FRONT TILT-OUT SPRONGE TRAY, REV-A-SHELF SLIM SERIES WITH EURO HINGE INSTALLATION
- [H-12]** HAYELE 4" ADJUSTABLE LEGS 697.59.300
- [H-13]** AVENTOS H-K-5

SPECIAL NOTES

PLEASE NOTE ALL DIMENSIONS REFLECTED ON THIS DRAWING ARE BASED ON ARCHITECTURAL PLANS AND DETAILS AND ARE SUBJECT OF VERIFICATION IN FIELD PRIOR OF MANUFACTURING AND INSTALLATION.

SUBMITTAL

DATE: 06/02/2011 BY: MT FOR: SHOP DRAWINGS FOR APPROVAL

REVISIONS

DATE: 06/25/2011 BY: MB FOR: FABRICATION

PROJECT:

PRIVATE RESIDENCE
 125 WEST 12 5H STREET
 NEW YORK, NEW YORK 10069

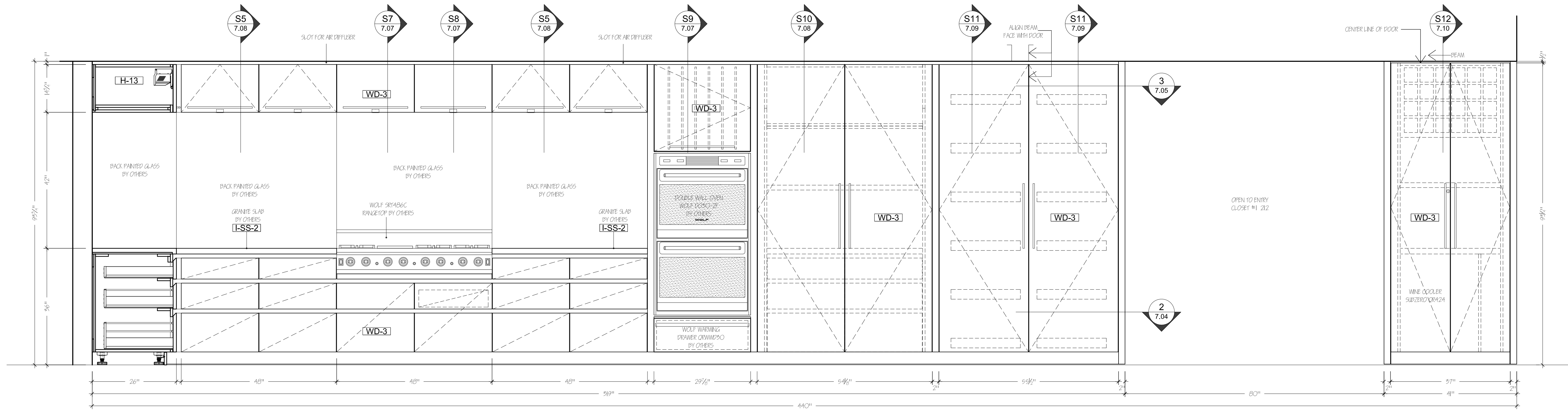
TITLE:

KITCHEN 213
 DESIGNER: WORKSHOP / APG LLC
 555 EIGHT AVENUE, 5F, 1509
 NEW YORK, NEW YORK 10018

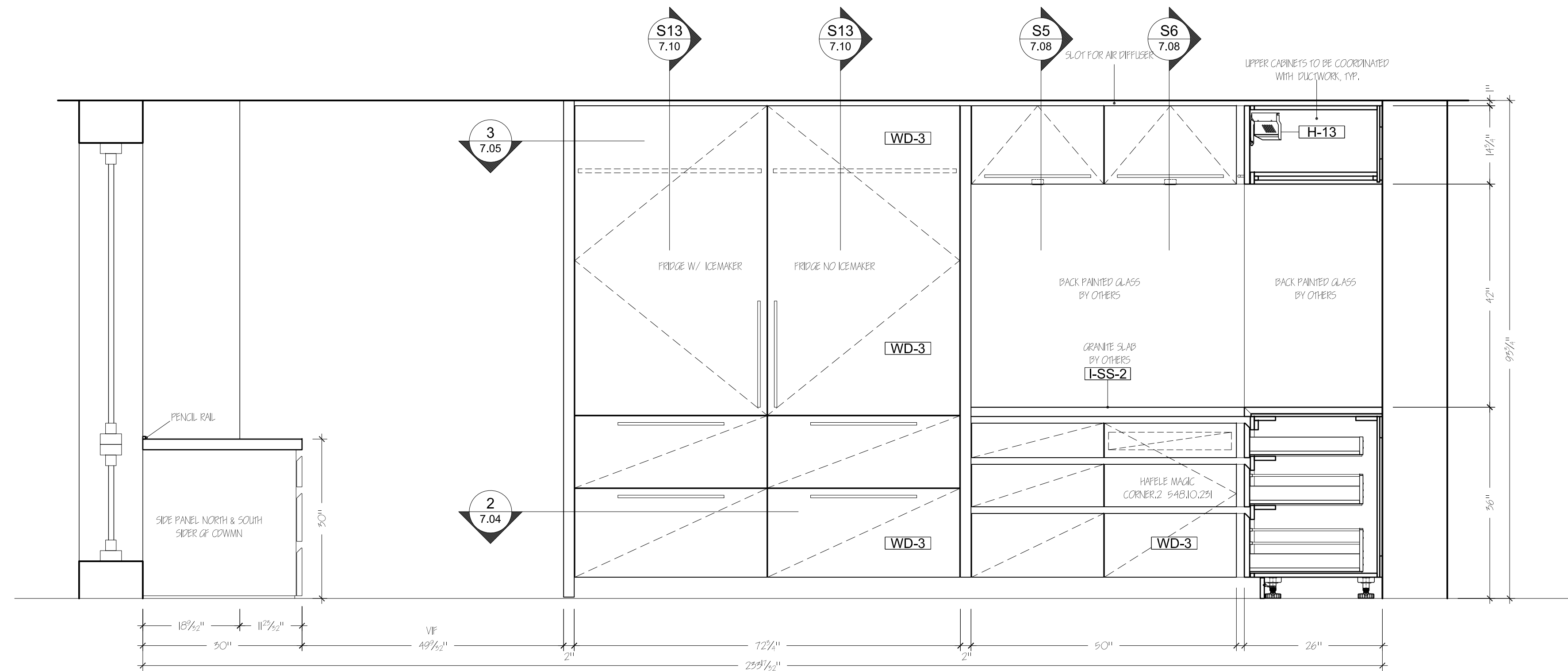
CONTRACTOR:

MENTORS CONSTRUCTION LLC
 NEW YORK, NEW YORK

DRAWN BY: MT **DATE:** 06/15/11 **PAGE:**
SCALE: AS NOTED **JOB NO:** AG-042011-11 **7.05**



E ELEVATION STOVE ELEVATION
 SCALE: 3/4" = 1'-0" KITCHEN 213



F ELEVATION FRIDGE ELEVATION
 SCALE: 3/4" = 1'-0" KITCHEN 213

MATERIALS	
I-LPT-5	HIGH GLOSS LACQUER PAINTED W/OF COLOR TBD.
I-SS-2	GRANITE SLAB BY OTHERS 5/4
I-SS-3	CESARSTONE SLAB BY OTHERS 5/4
WD-1	REFINISHED MAPLE VENEER ON WDF CORE
WD-2	SHOP GRADE PLYWOOD FOR SLETOP AND STRETCHERS
WD-3	WALNUT PLAIN SLICED VENEER, VERTICAL GRAIN.

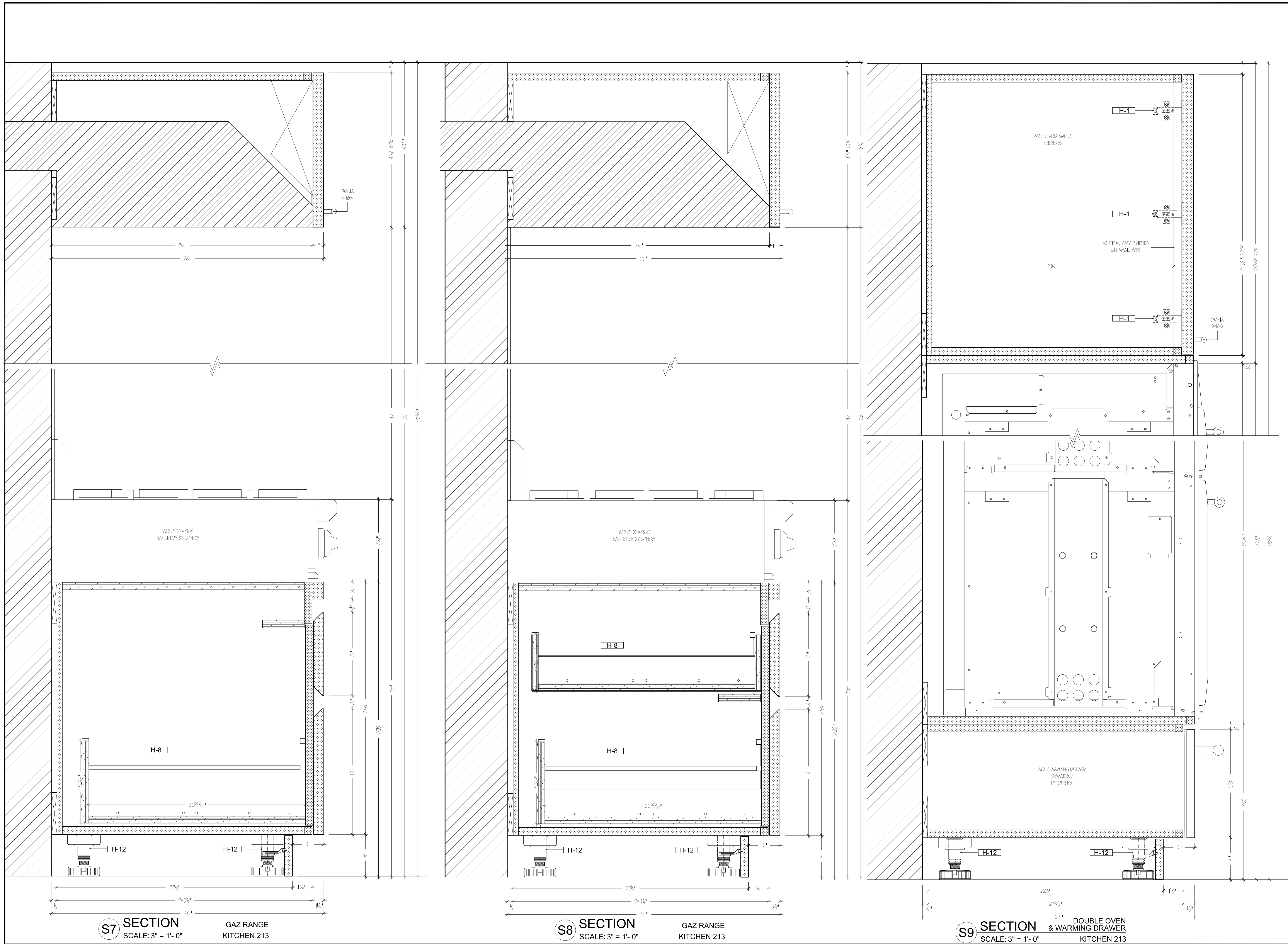
HARDWARE	
H-1	SALICE FULL OVERLAY CONCEALED EUROPEAN HINGE 52917.507
H-5	TANDEMBOX PLUS PLUMOTION "M" 450 18" DRAWER RUNNERS
H-6	TANDEMBOX PLUS PLUMOTION "M" 450 18" DRAWER RUNNERS
H-7	TANDEMBOX PLUS PLUMOTION "M" 600 24" DRAWER RUNNERS
H-8	TANDEMBOX PLUS PLUMOTION "M" 600 24" DRAWER RUNNERS
H-9	TANDEMBOX PLUS PLUMOTION "M" 450 18" DRAWER RUNNERS
H-10	ITEM #: 505J5.555 KV USCIB-2-SOPT TRASH CAN DOUBLE, BOTTOM MOUNTED, 50 QUART, STEEL, FROSTED NICKEL
H-11	SINK FRONT 1L-F-OUT SPOUNGE BRAY, REV-A-SHELF SLIM SERIES WITH EURO HINGE INSTALLATION
H-12	HAFELE 4" ADJUSTABLE LEGS 657.59.300
H-13	AVENTOS HK-S

SPECIAL NOTES
 PLEASE NOTE ALL DIMENSIONS REFLECTED ON THIS DRAWING ARE BASED ON ARCHITECTURAL PLANS AND DETAILS AND ARE SUBJECT OF VERIFICATION IN FIELD PRIOR OF MANUFACTURING AND INSTALLATION.

SUBMITTAL	
DATE:	BY: FOR:
05/02/2011	MT SHOP DRAWINGS FOR APPROVAL

REVISIONS	
DATE:	BY: FOR:
06/25/2011	MB FABRICATION

PROJECT:	
PRIVATE RESIDENCE	
125 WEST 12 5H STREET NEW YORK, NEW YORK 10065	
TITLE:	KITCHEN 213
DESIGNER:	WORKSHOP / APD LLC 555 EIGHT AVENUE, 5F, 1509 NEW YORK, NEW YORK 10018
CONTRACTOR:	MENTORS CONSTRUCTION LLC NEW YORK, NEW YORK
DRAWN BY:	MT DATE: 05/15/11 PAGE:
SCALE:	AS NOTED JOB NO: 10-042011-1 7.06



MATERIALS	
LPT-5	HIGH GLOSS LACQUER PAINTED MDF COLOR TBD.

L-SS-2	GRANITE SLAB BY OTHERS 5/4
--------	----------------------------

L-SS-3	CESARSTONE SLAB BY OTHERS 5/4
--------	-------------------------------

WD-1	REFINISHED MAPLE VENEER ON MDF CORE
------	-------------------------------------

WD-2	SHOP GRADE PLYWOOD FOR SLETOP AND STRETCHERS
------	--

WD-3	WALNUT PLAIN SLICED VENEER, VERTICAL GRAIN.
------	---

HARDWARE	
H-1	SALICE FULL OVERLAY CONCEALED EUROPEAN HINGE 52917.507

H-5	TANDEMBOX PLUS PLUMOTION 18" 450 18" DRAWER RUNNERS
-----	---

H-6	TANDEMBOX PLUS PLUMOTION 18" 450 18" DRAWER RUNNERS
-----	---

H-7	TANDEMBOX PLUS PLUMOTION 18" 600 24" DRAWER RUNNERS
-----	---

H-8	TANDEMBOX PLUS PLUMOTION 18" 600 24" DRAWER RUNNERS
-----	---

H-9	TANDEMBOX PLUS PLUMOTION 18" 450 18" DRAWER RUNNERS
-----	---

H-10	ITEM #: 909JLS595 KV USCIB-2-50PT TRASH CAN DOUBLE BOTTOM MOUNTED, 50 QUART, STEEL, FROSTED NICKEL
------	--

H-11	SINK FRONT TILT-OUT SPRONGE TRAY, REV-A-SHELF SLIM SERIES WITH EURO HINGE INSTALLATION
------	--

H-12	HAWELE 4" ADJUSTABLE LEGS 697.59.300
------	--------------------------------------

H-13	AVENTOS HK-5
------	--------------

SPECIAL NOTES
 PLEASE NOTE ALL DIMENSIONS REFLECTED ON THIS DRAWING ARE BASED ON ARCHITECTURAL PLANS AND DETAILS AND ARE SUBJECT OF VERIFICATION IN FIELD PRIOR OF MANUFACTURING AND INSTALLATION.

SUBMITTAL	
DATE:	BY: FOR:
06/02/2011	MT SHOP DRAWINGS FOR APPROVAL

REVISIONS	
DATE:	BY: FOR:
06/25/2011	MB FABRICATION

PROJECT:
PRIVATE RESIDENCE
 125 WEST 12 5H STREET
 NEW YORK, NEW YORK 10069

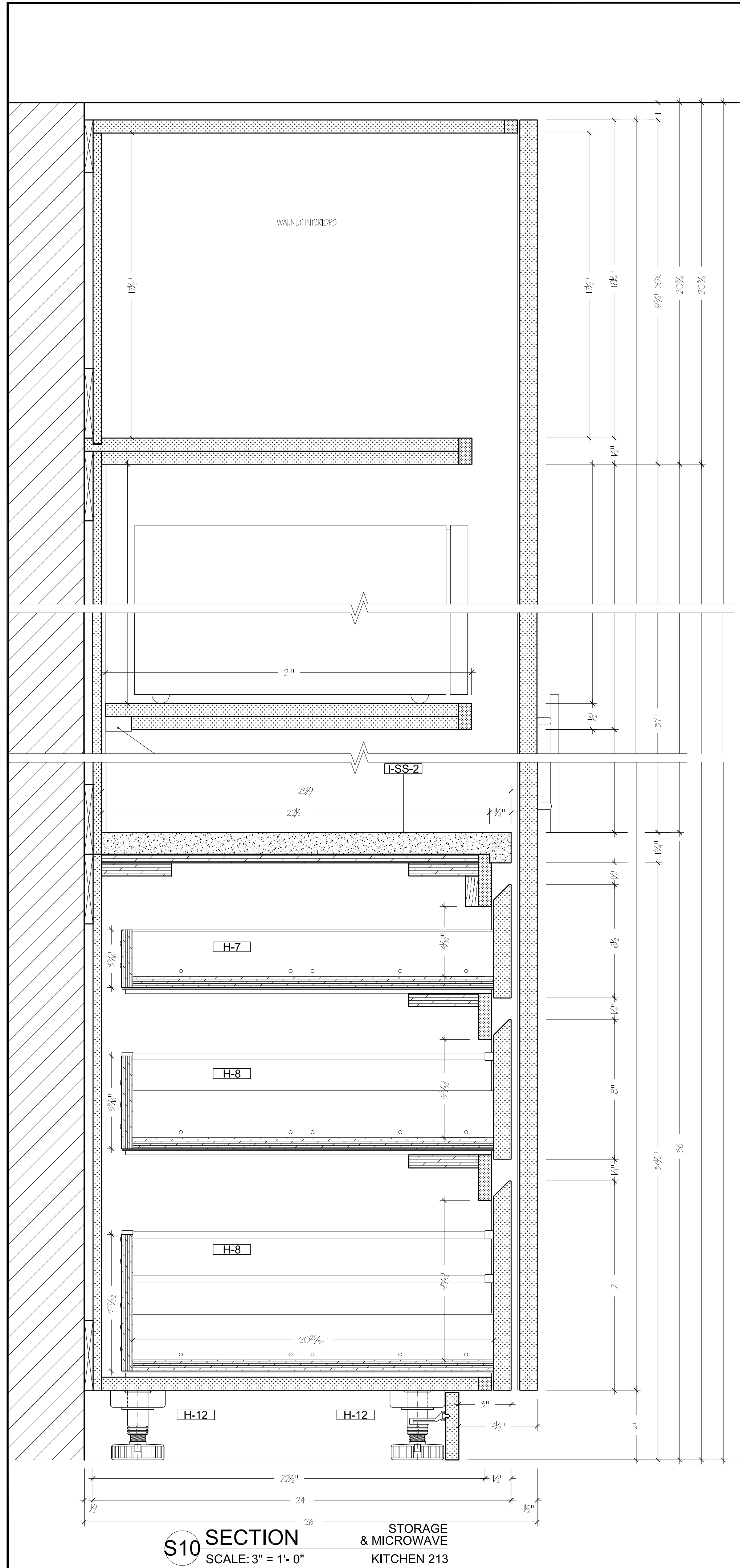
TITLE: KITCHEN 213
DESIGNER: WORKSHOP / APD LLC
 555 EIGHT AVENUE, 5F, 1009
 NEW YORK, NEW YORK 10065

CONTRACTOR: MENTORS CONSTRUCTION LLC
 NEW YORK, NEW YORK
DRAWN BY: MT **DATE:** 06/15/11 **PAGE:**
SCALE: AS NOTED **JOB NO:** 10-04208-11 **7.07**

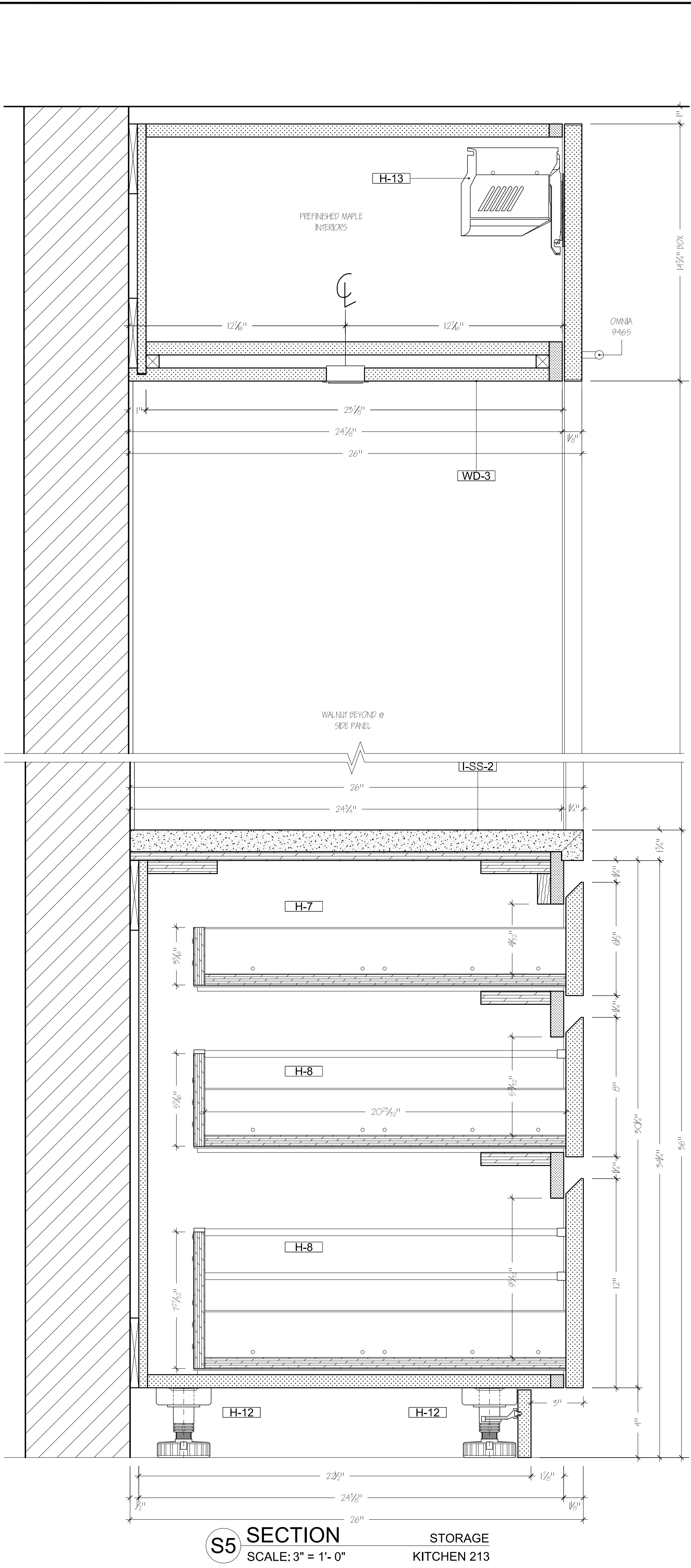
S7 SECTION
 SCALE: 3" = 1'-0"
 GAZ RANGE
 KITCHEN 213

S8 SECTION
 SCALE: 3" = 1'-0"
 GAZ RANGE
 KITCHEN 213

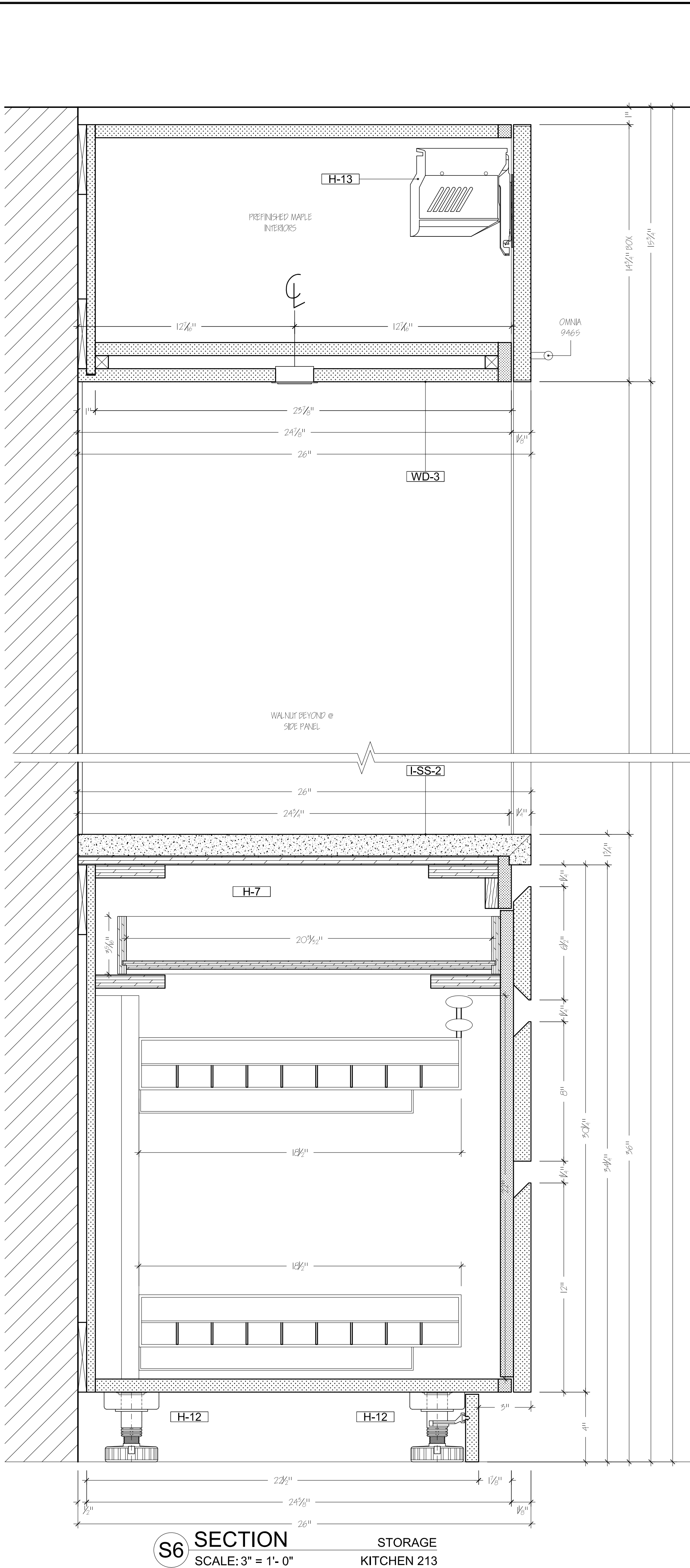
S9 SECTION
 SCALE: 3" = 1'-0"
 DOUBLE OVEN
 & WARMING DRAWER
 KITCHEN 213



S10 SECTION
 SCALE: 3" = 1'-0"
 STORAGE & MICROWAVE
 KITCHEN 213



S5 SECTION
 SCALE: 3" = 1'-0"
 STORAGE
 KITCHEN 213



S6 SECTION
 SCALE: 3" = 1'-0"
 STORAGE
 KITCHEN 213

MATERIALS	
I-LPT-5	HIGH GLOSS LACQUER PAINTED MDF COLOR TBD.
I-SS-2	GRANITE SLAB BY OTHERS 5/4
I-SS-3	CESARSTONE SLAB BY OTHERS 5/4
WD-1	PREFINISHED MAPLE VENEER ON MDF CORE
WD-2	SHOP GRADE PLYWOOD FOR SLETOP AND STRETCHERS
WD-3	WALNUT PLAIN SLICED VENEER, VERTICAL GRAIN.

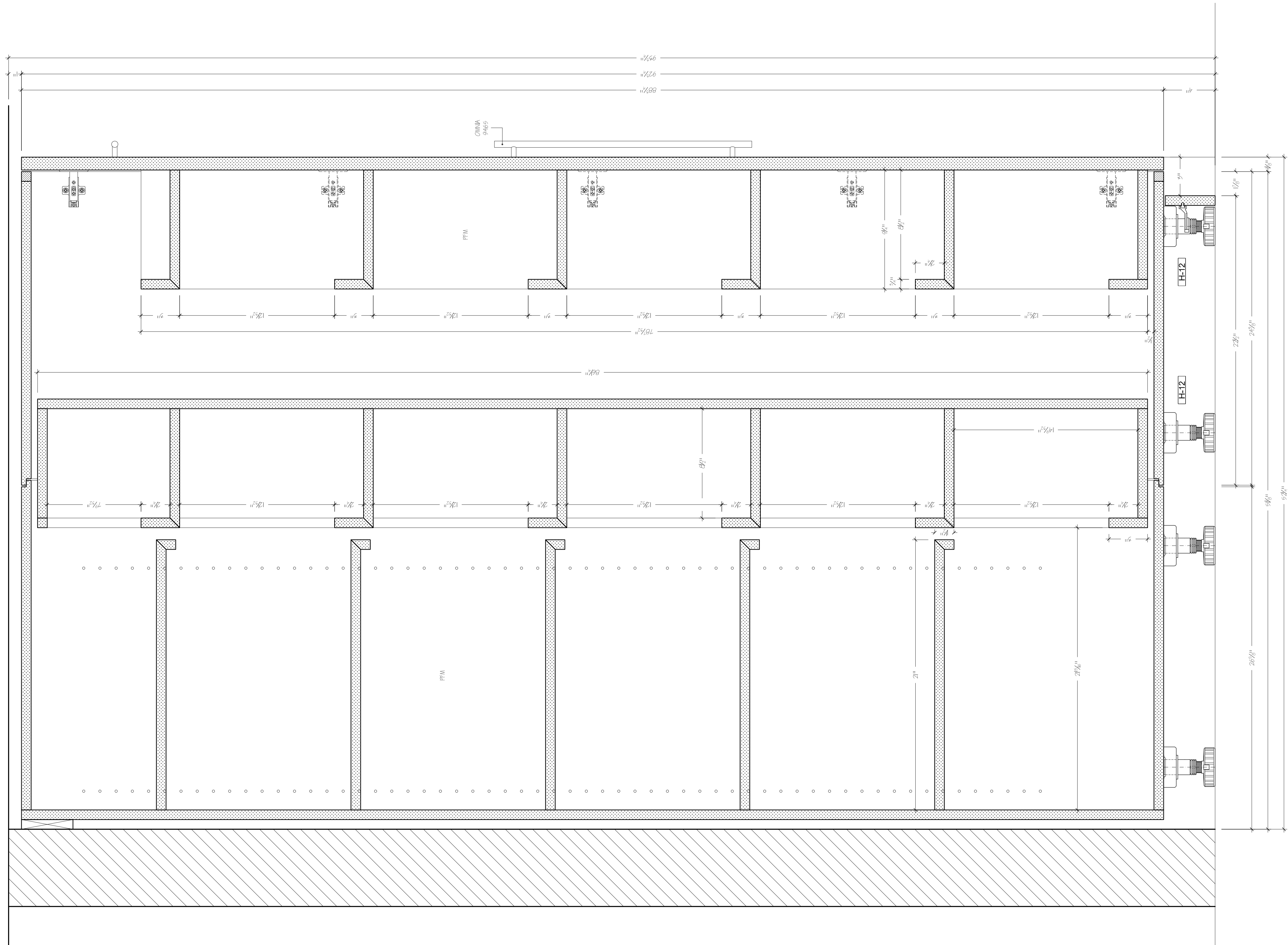
HARDWARE	
H-1	SALICE FULL OVERLAY CONCEALED EUROPEAN HINGE 52917.507
H-5	TANDEMBOX PLUS PLUMOTION 18" 450 18" DRAWER RUNNERS
H-6	TANDEMBOX PLUS PLUMOTION 18" 450 18" DRAWER RUNNERS
H-7	TANDEMBOX PLUS PLUMOTION 18" 600 24" DRAWER RUNNERS
H-8	TANDEMBOX PLUS PLUMOTION 18" 600 24" DRAWER RUNNERS
H-9	TANDEMBOX PLUS PLUMOTION 18" 450 18" DRAWER RUNNERS
H-10	ITEM #: 909J5-599 KV USCB-2-SOPT TRASH CAN DOUBLE BOTTOM MOUNTED, 60 QUART, STEEL, FROSTED NICKEL
H-11	SINK FRONT TILT-OUT SPRING TRAY, REV-A-SHELF SLIM SERIES WITH EURO HINGE INSTALLATION
H-12	HAVELLE 4" ADJUSTABLE LEGS 697.59.300
H-13	AVANTOS HK-5

SPECIAL NOTES
 PLEASE NOTE ALL DIMENSIONS REFLECTED ON THIS DRAWING ARE BASED ON ARCHITECTURAL PLANS AND DETAILS AND ARE SUBJECT OF VERIFICATION IN FIELD PRIOR OF MANUFACTURING AND INSTALLATION.

SUBMITTAL	
DATE:	BY: FOR:
06/02/2011	MT SHOP DRAWINGS FOR APPROVAL

REVISIONS	
DATE:	BY: FOR:
06/25/2011	MB FABRICATION

PROJECT:		
PRIVATE RESIDENCE		
125 WEST 12 5H STREET NEW YORK, NEW YORK 10069		
TITLE:	KITCHEN 213	
DESIGNER:	WORKSHOP / APD LLC 555 EIGHT AVENUE, 5F, 1509 NEW YORK, NEW YORK 10065	
CONTRACTOR:	MENTORS CONSTRUCTION LLC NEW YORK, NEW YORK	
DRAWN BY:	DATE:	PAGE:
MT	06/15/11	7.08
SCALE:	JOB NO.:	
AS NOTED	AG-0428-11	



S9 SECTION
 SCALE: 3" = 1'-0"
 PANTRY
 KITCHEN 213

MATERIALS

LPT-5	HIGH GLOSS LACQUER PAINTED MDF COLOR TBD.
L-SS-2	GRANITE SLAB BY OTHERS 5/4
L-SS-3	CESARSTONE SLAB BY OTHERS 5/4
WD-1	REFINISHED MAPLE VENEER ON MDF CORE
WD-2	SHOP GRADE PLYWOOD FOR SLETOP AND STRETCHERS
WD-3	WALNUT PLAIN SLICED VENEER, VERTICAL GRAIN.

HARDWARE

H-1	SALICE FULL OVERLAY CONCEALED EUROPEAN HINGE 52917.507
H-5	TANDEMBOX PLUS PLUMOTION "M" 450 18" DRAWER RUNNERS
H-6	TANDEMBOX PLUS PLUMOTION "M" 450 18" DRAWER RUNNERS
H-7	TANDEMBOX PLUS PLUMOTION "M" 600 24" DRAWER RUNNERS
H-8	TANDEMBOX PLUS PLUMOTION "M" 600 24" DRAWER RUNNERS
H-9	TANDEMBOX PLUS PLUMOTION "M" 450 18" DRAWER RUNNERS
H-10	ITEM #: 905J5.555 KV USCIB-2-SOPT TRASH CAN DOUBLE BOTTOM MOUNTED, 60 QUART, STEEL, FROSTED NICKEL
H-11	SINK FRONT TILT-OUT SPOUNGE TRAY, REV-A-SHELF SLIM SERIES WITH EURO HINGE INSTALLATION
H-12	HAYELE 4" ADJUSTABLE LEGS 657.59.300
H-13	AVENTOS H-5

SPECIAL NOTES

PLEASE NOTE ALL DIMENSIONS REFLECTED ON THIS DRAWING ARE BASED ON ARCHITECTURAL PLANS AND DETAILS AND ARE SUBJECT OF VERIFICATION IN FIELD PRIOR OF MANUFACTURING AND INSTALLATION.

SUBMITTAL

DATE:	BY:	FOR:
06/02/2011	MT	SHOP DRAWINGS FOR APPROVAL

REVISIONS

DATE:	BY:	FOR:
06/25/2011	MB	FABRICATION

PROJECT:

PRIVATE RESIDENCE
 125 WEST 12 5H STREET
 NEW YORK, NEW YORK 10069

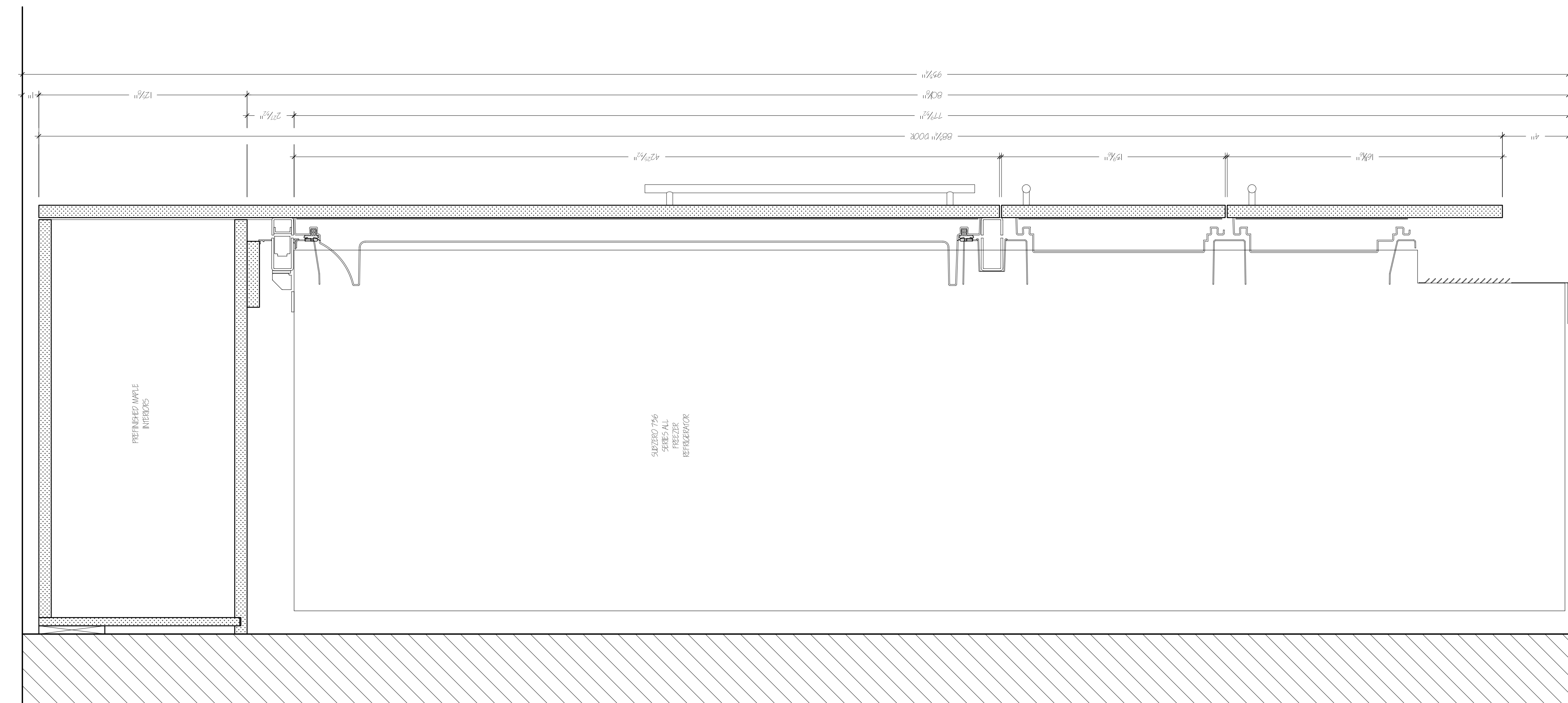
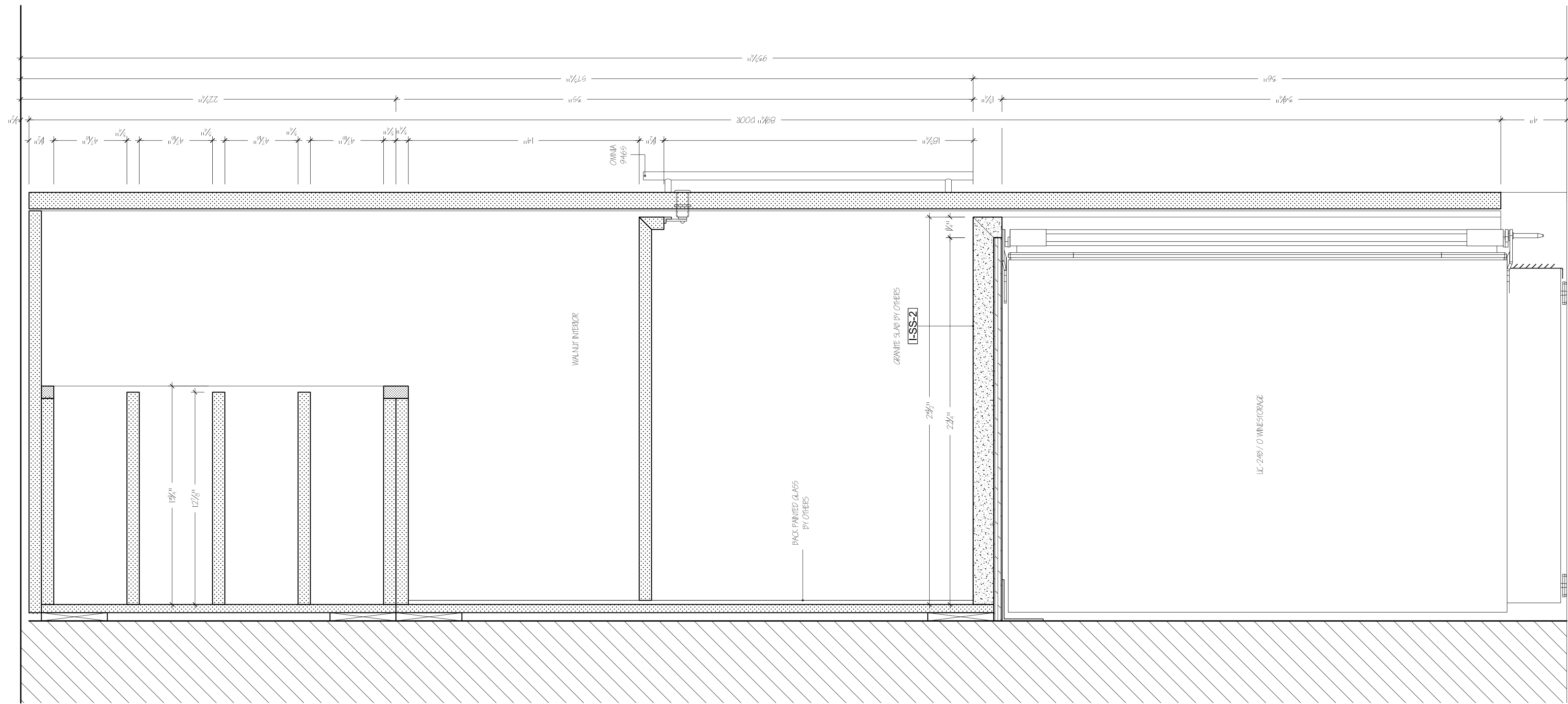
TITLE:

KITCHEN 213

DESIGNER:
 WORKSHOP / APD LLC
 555 EIGHT AVENUE, 5F, 1509
 NEW YORK, NEW YORK 10005

CONTRACTOR:
 MENTORS CONSTRUCTION LLC
 NEW YORK, NEW YORK

DRAWN BY:	MT	DATE:	06/15/11	PAGE:	7.09
SCALE:	AS NOTED	JOB NO.:	10-04028-11		



MATERIALS	
LPT-5	HIGH GLOSS LACQUER PAINTED MDF COLOR TBD.
LSS-2	GRANITE SLAB BY OTHERS 5/4
LSS-3	CESARSTONE SLAB BY OTHERS 5/4
WD-1	REFINISHED MAPLE VENEER ON MDF CORE
WD-2	SHOP GRADE PLYWOOD FOR SLETOP AND STRETCHERS
WD-3	WALNUT PLAIN SLICED VENEER, VERTICAL GRAIN.

HARDWARE	
H-1	SALICE FULL OVERLAY CONCEALED EUROPEAN HINGE 52917.507
H-5	TANDEMBOX PLUS PLUMOTION "M" 450 18" DRAWER RUNNERS
H-6	TANDEMBOX PLUS PLUMOTION "M" 450 18" DRAWER RUNNERS
H-7	TANDEMBOX PLUS PLUMOTION "M" 600 24" DRAWER RUNNERS
H-8	TANDEMBOX PLUS PLUMOTION "M" 600 24" DRAWER RUNNERS
H-9	TANDEMBOX PLUS PLUMOTION "M" 450 18" DRAWER RUNNERS
H-10	ITEM #: 905J5.999 KV USCIB-2-50PT TRASH CAN DOUBLE BOTTOM MOUNTED, 60 QUART, STEEL, FROSTED NICKEL
H-11	SINK FRONT 1L-F-OUT SPONGE TRAY, REV-A-SHELF SLIM SERIES WITH EURO HINGE INSTALLATION
H-12	WHEEL 4" ADJUSTABLE LEGS 697.59.300
H-13	AVENTOS HK-5

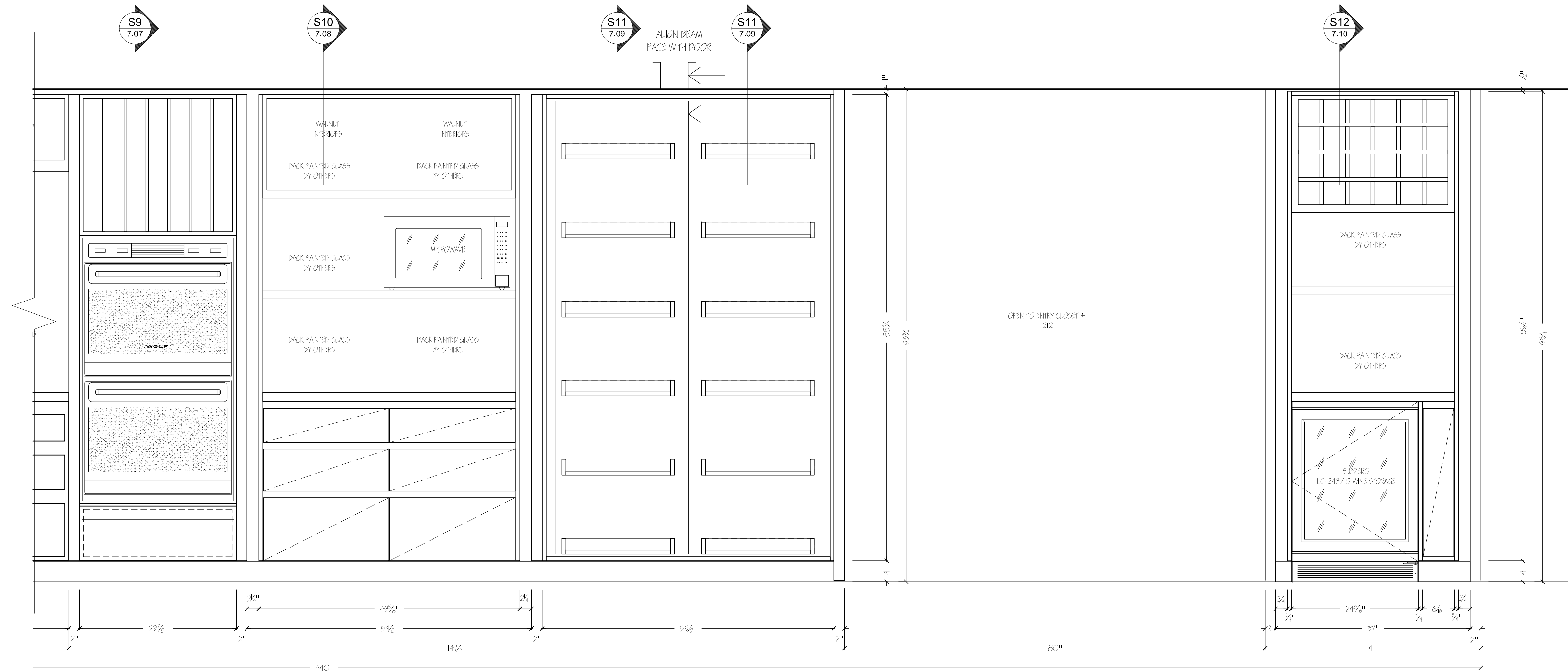
SPECIAL NOTES

PLEASE NOTE ALL DIMENSIONS REFLECTED ON THIS DRAWING ARE BASED ON ARCHITECTURAL PLANS AND DETAILS AND ARE SUBJECT OF VERIFICATION IN FIELD PRIOR OF MANUFACTURING AND INSTALLATION.

SUBMITTAL	
DATE:	BY: FOR:
06/02/2011	MT SHOP DRAWINGS FOR APPROVAL

REVISIONS	
DATE:	BY: FOR:
06/29/2011	MB FABRICATION

PROJECT:		
PRIVATE RESIDENCE		
125 WEST 12 5H STREET NEW YORK, NEW YORK 10069		
TITLE: KITCHEN 213		
DESIGNER:		
WORKSHOP / APD LLC 555 EIGHT AVENUE, 5F, 1509 NEW YORK, NEW YORK 10018		
CONTRACTOR:		
MENTORS CONSTRUCTION LLC NEW YORK, NEW YORK		
DRAWN BY: MT	DATE: 06/15/11	PAGE:
SCALE: AS NOTED	JOB NO: 10-04020-11	7.10



E ELEVATION DOOR REMOVED PANTRIES
 SCALE: 1" = 1'-0" KITCHEN 213

MATERIALS	
LPT-5	HIGH GLOSS LACQUER PAINTED MDF COLOR TBD.
L-SS-2	GRANITE SLAB BY OTHERS 5/4
L-SS-3	CHESTERSTONE SLAB BY OTHERS 5/4
WD-1	REFINISHED MAPLE VENEER ON MDF CORE
WD-2	SHOP GRADE PLYWOOD FOR SLETOP AND SRETCHERS
WD-3	WALNUT PLAIN SLICED VENEER, VERTICAL GRAIN.

HARDWARE	
H-1	SALICE FULL OVERLAY CONCEALED EUROPEAN HINGE 52917.507
H-5	TANDEMBOX PLUS PLUMOTION "M" 450 18" DRAWER RUNNERS
H-6	TANDEMBOX PLUS PLUMOTION "M" 450 18" DRAWER RUNNERS
H-7	TANDEMBOX PLUS PLUMOTION "M" 600 24" DRAWER RUNNERS
H-8	TANDEMBOX PLUS PLUMOTION "M" 600 24" DRAWER RUNNERS
H-9	TANDEMBOX PLUS PLUMOTION "M" 450 18" DRAWER RUNNERS
H-10	ITEM #: 905J5.955 KV USCIB 2-SOFT TRASH CAN DOUBLE BOTTOM MOUNTED, 60 QUART, STEEL, FROSTED NICKEL
H-11	SINK FRONT 1L-F-OUT SPONGE TRAY, REV-A-SHELF SLIM SERIES WITH EURO HINGE INSTALLATION
H-12	WHEEL 4" ADJUSTABLE LEGS 657.59.300
H-13	AVENTOSHK-S

SPECIAL NOTES
 PLEASE NOTE ALL DIMENSIONS REFLECTED ON THIS DRAWING ARE BASED ON ARCHITECTURAL PLANS AND DETAILS AND ARE SUBJECT OF VERIFICATION IN FIELD PRIOR OF MANUFACTURING AND INSTALLATION.

SUBMITTAL	
DATE:	BY: FOR:
05 / 02 / 2011	MT SHOP DRAWINGS FOR APPROVAL

REVISIONS	
DATE:	BY: FOR:
06 / 25 / 2011	MB FABRICATION

PROJECT:		
PRIVATE RESIDENCE		
125 WEST 12 5H STREET NEW YORK, NEW YORK 10065		
TITLE: KITCHEN 213		
DESIGNER:		
WORKSHOP / APD LLC 555 EIGHT AVENUE, 5F, 1509 NEW YORK, NEW YORK 10018		
CONTRACTOR:		
MENTORS CONSTRUCTION LLC NEW YORK, NEW YORK		
DRAWN BY: MT	DATE: 05/15/11	PAGE:
SCALE: AS NOTED	JOB NO: 10-04028-11	7.11